

WHADDON QUARTERLY

Spring 2024



Welcome to Bump Start, the baby shop at Whaddon. We stock everything you could need for your baby, from car seats to cots to carriers. We pride ourselves on our product knowledge and will help find the ideal products for you. We look forward to seeing you soon.

OPENING TIMES

Mon	Closed
Tue	10am - 4pm
Wed	10am - 4pm
Thurs	10am - 5pm
Fri	10am - 5pm
Sat	10am - 5pm
Sun	11am - 3pm

We are just 10 minutes from both Milton Keynes and Buckingham

Visit us at:

Bump Start Baby Shop
Coddimoor Farm Whaddon
Milton Keynes Bucks MK17 0LR

0800 594 3052

email: team@bumpstartbabyshop.co.uk
appointments: bumpstartappointments@gmail.com
web: www.bumpstartbabyshop.co.uk



Welcome to Whaddon Quarterly!

CONTENTS

Editor's Letter	Pg 4
Chairman's report	Pg 5
Clerk's Corner & Whaddon Quarterly Advertising rates	Pg 6
Whaddon Jubilee Village Hall	Pg 7-9
News from Chase Choir	Pg 10
Children's Pyjama Appeal	Pg 11
Celebrating the D-Day Landings	Pg 12-13
News from Whaddon School	Pg 14
Neighbourhood Watch	Pg 15
Thames Valley Police	Pg 16
News from Whaddon's W.I.	Pg 17
St Mary's Christmas Fundraising Night	Pg 18
Church Fundraiser – Acoustic Musical Evening	Pg 19-20
Reflections from the Rectory	Pg 21
News from St. Mary's Church	Pg 22
Church Fundraiser – St Mary's Church Rocks	Pg 23
Shenley Park SPD update	Pg 25
Planning Snippets	Pg 28-29
When Gravel Pits Surrounded Whaddon	Pg 30
Whaddon's Wonderful Watchmaker – Pt 1	Pg 31-33
Local Advertisers	Pg 34-43
Dates for your Diary – What's on Whaddon	Pg 44

With Warm Thanks to All Contributors and Helpers

Editor: Sally Shrimpton

Proofreading and Distribution thanks to Marianna Beckwith

Printer: Harlequin Press Ltd., 12 Beacon House Farm, Warren Road, Little Horwood,
MK17 0PS Tel: 01908 506722

For comments, queries and articles please contact:

wqeditor@whaddonbucks-pc.gov.uk

**If you would like to advertise in the Whaddon Quarterly, please send your advertisement to the Editor
as above.**

The views expressed in this magazine do not necessarily reflect those of the Editors or Whaddon Parish Council. Every effort is made to ensure accuracy, but the Editor does not accept liability for any errors within contributed material. The Editor's decision is final.

Editor's Letter

Welcome to the Spring edition of The Whaddon Quarterly

Hello readers, I would like to introduce myself as the new Editor of the Whaddon Quarterly. For those of you who don't know me, I grew up in a suburb of NW London and had not really had experience of village life until I moved here to Whaddon in May 2022. What can I say? I absolutely love where we live. We are surrounded by beautiful countryside, and it is a delight to be able to hear the church bells each hour. The villagers are all lovely and there is always someone who can help, or know someone who can, sound advice is always on hand when needed and I have made some lovely new friends.

I moved in just as the Summer edition of the WQ dropped on the mat and I quickly became an avid reader of it, so being able to be the custodian of the editorial role is an honour and also means a sneaky peek at all of the articles before they go to print!

Looking at this quarter's content and having insider knowledge, Whaddon is going to have a very active year. There is so much to look forward to.

I would like to give special thanks to Sharon for handing over some very tidy WQ reins and to thank her for all of her hard work on the magazine. Also, for giving me such enormous shoes to fill! I will do my best!

If you have something that you wish to share in our village magazine, or have ideas of what you'd like to see included, please contact the editorial team on Wqeditor@Whaddonbucks-pc.gov.uk

Deadline for the Summer edition is **17th May 2024** with publication planned within 7 days.

Sally
Editor



Want your photo on the front cover?

All entries to be submitted by 15th May 2024 for consideration

wqeditor@whaddonbucks-pc.gov.uk

Get your copy of Whaddon Quarterly by Email!

Sign up NOW to get your copy of the Whaddon Quarterly by email and in a 2 for 1 offer include your request to receive important information by email too. Send your request to Clerk@Whaddonbucks-pc.gov.uk and you'll be added to the email lists.

Your personal information will be kept strictly confidential and will NOT be passed on or used for any other purpose than for WQ, Council and/or Police matters.

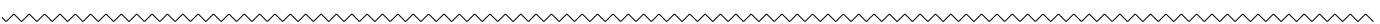


Whaddon Parish Council Chairman's Report

I said in my last report that changes lie ahead with the looming prospect of Shenley Park on our doorstep. The Parish Council is doing everything within its power to achieve the best outcome for the village in the future. It will not be and is not easy. I think all of us understand the need for new housing in England, but it needs to be in the right place, and it was an appalling decision by Aylesbury Vale District Council some years ago to try to meet its target by choosing land adjacent to Milton Keynes and pretending it was nothing to do with Milton Keynes but just another rural settlement in North Buckinghamshire. Now Buckinghamshire Council bears the responsibility for achieving a satisfactory outcome, but Whaddon Parish Council will also be and is now striving to get that which is the best and least harmful for the residents of Whaddon. The Parish Council has pointed out the very serious traffic problems which a development of over a thousand houses will engender in Whaddon; to which can be added the vehicles arising from the Salden Chase housing development (between here and Newton Longville) all emanating onto an already crowded A421. Shenley Park will also create social problems for organisations such as the school, the village hall, the church and the pub all having to confront duplication and competition from its facilities. The village will eventually have to decide whether it wishes to compete or cooperate. Likewise, the new residents of Shenley Park will have to decide whether they are in reality part of Milton Keynes or of rural North Bucks.

As your Parish Council, it is our task to take Whaddon forward, taking on board your views as we do so, to ensure the best outcome.

Cllr Billy Stanier Chairman
Whaddon Parish Council





Clerk's Corner

Helpful information from Whaddon Parish Council

Highways Again - The Green Claims Initiative!

Bucks Council is looking to recover costs from those who damage road signs, bollards, lights, etc, and refuse to cut back dangerous overhanging hedges and similar problems.

How Can You Help?

If you have any details, photos, cctv or evidence to identify the culprit(s) please email greenclaimsandenforcement@buckinghamshire.gov.uk. This will be invaluable in recovering costs of repairs and replacements. This also applies to evidence of fly-tipping which can be reported on www.fixmystreet.buckinghamshire.gov.uk

Highways Emergency Numbers

If you spot a dangerous highway problem that may cause threat to life, please call:

01296 382416 in office hours

01296 486630 out of hours

Your prompt action may help save lives!

Date of Next Whaddon Parish Council Meeting(s)

7.00pm 14th March 2024, at The Chapel, Stock Lane, MK17 0LU.

Meetings are generally every other month on 2nd Thursday, but please check the village notice board at the bus stop to confirm these dates and the location, as these can be subject to change.

Full details are also on the WPC website at www.whaddonbucks-pc.gov.uk All welcome!

Whaddon Quarterly Advertising Rates and Publication Policy

General and Commercial Advertisers		4 Editions
Full Page (A5)	Black and White	£90
	Colour	£100
Half Page	Black and White	£52
	Colour	P.O.A.
Fees payable in advance on receipt of invoice. Interest may be charged on overdue accounts	BACS payment to: Unity Trust Bank	Sort Code: 60-83-01 Account 20454254
Non-Commercial Local Advertisers		
Full and Half Page adverts (subject to space and at Editor's discretion)	Black and White Colour	FREE FREE

- All copy must be submitted in .docx, PDF or high resolution .jpg format
- Publication is 4 times per year – Spring, Summer, Autumn, Winter and copy deadlines can be obtained from the Editor.
- Content received after the deadline may not be included, but best efforts will be made to meet your request.

Content Policy and Copyright

All material for publication in the Whaddon Quarterly is to be appropriate and suitable; and it may not contain any content that could be deemed as offensive, discriminatory, or derogatory. Any submissions deemed not to meet this standard will be subject to edit or exclusion by the Editor. The Editor's decision is final in this regard. Content of Whaddon Quarterly is subject to Copyright and may not be used or reproduced without the Editor's permission.

Jubilee Hall Whaddon's Village Hall



A lot has happened since the last Whaddon Quarterly and the hall has once again been at the heart of the community's entertainment and fund raising activities.

Saturday 2nd December: Christmas Social Event

Although very cold, the weather was kind to us with no rain. Thank you to Whaddon Parish Council, St Mary's Church, Chase Choir and our own Whaddon Jubilee Hall Committee for all working together to enable such a wonderful start to the festive season.



Mulled wine and "special" hot chocolate were served by the Jubilee Hall elves before carols were enthusiastically sung in the hall. Then the crowds moved into the garden for the Christmas tree lights switch-on. A social night followed in the hall and the welcome addition of the Pitstop Trailer food van encouraged people to stay to eat, drink and have fun with the villagers and friends. Lots of our regular supporters came along and there were several new faces. It was great to meet you all.

Sunday 3rd December: Christmas Wreath Making

A relaxed, informal Christmas wreath-making workshop was held at the Hall. Several villagers attended, and everyone designed and created their own special masterpieces.

Special thanks to Thistlerose Florals for hosting the workshop.



Friday 19th January: Quiz Night

We had another sell-out evening at our ever-popular Quiz night. Once again, we enjoyed the company of some Nash neighbours as well as some new faces from Whaddon.

Congratulations to Crystal Methodists (pictured below) who narrowly beat the defending champions, Les Quizerables, in a closely-fought battle of the brains, where less than 10 points separated the top 5 teams.



UPCOMING EVENTS:

Friday 8th March: American Western Evening

Enjoy a taste of the wild west with Tex Mex Style Food and Country and Western entertainment.

Tickets for these events sell out so quickly, so if you have missed this one, watch out for more exciting evenings coming later this year.



Friday 26th April: Quiz Night

7pm: Doors and bar opens. Quiz starts at 8pm.

Come along to this popular village event and see if you can put the Crystal Methodists in their place and be the "Brainiest in the Village".

Teams of up to 6 people.

£4 per person entry fee payable in advance.

Please e-mail whaddonvillagehall@gmail.com to book your table.



SAVE THE DATE

Saturday 8th June: Annual Whaddon BBQ and Social Evening.

Further details will be in the next Whaddon Quarterly and make sure to check the Jubilee Hall noticeboard.



Please Like, share, and follow our page "Whaddon Jubilee Hall".

Whaddon Jubilee Hall – Chairman’s Report 2023

The Jubilee Hall Committee thought it would be useful to include the Chairman’s Report from last November’s AGM. Three new committee members were elected to our committee in November.

The major focus of the past year has been in protecting the fabric of the building. This comes at a significant cost. Work has been required to decorate internally and externally, make parts of the hall water-tight once again and undertake necessary electrical work. However, I’m delighted that the costs of this (over £9,000) have been paid for almost entirely from current year income.

It is testimony to the hard work of the committee in putting on enjoyable and often profitable events that pay for these works, we have not needed to eat into our cash reserves to any significant extent.

The improvements to the fabric and decoration of the hall have contributed to increased income from general hires, societies and club hires and fundraising events. We have persevered with the trial of ambient lighting options for the main hall begun last year. Tweaks and small improvements continue to be made. The donation of lights by the Entertainers has allowed us to give the hall a cosier feel without incurring any significant cost.

What we offer isn’t all about generating funds. I’m pleased that the various events we have put on the past year have attracted different people from the village. While it is good to have regular support from a core of residents, Whaddon Jubilee Hall should be an asset for everyone.

In addition to garnering support from Whaddon, our events have also attracted support from Nash, particularly at the themed food night. At the last quiz night (our quiz nights continue to be some of our best events for raising funds), Nash residents took three tables and would have had a fourth if we’d had space to accommodate them. I encourage Whaddon residents to support the different and varied events that Nash village hall puts on.

Another important aspect of the attractiveness of the hall, is its cleanliness. I’d like to thank Sally Jaworska for her many years as our cleaner. Since her retirement, Lottie and then Alexey have covered admirably. With Trudy now taking over, we are in safe hands.

The next stage of improvements will be to replace the floor of the main and small halls. From some research in our archives, it looks as if the current floor was laid in 1986. Personally, I think it has lasted well for being 40 years old, but it is definitely time for it to be improved.

I’d like to end the report on the last year by thanking everyone on the committee. All of you have played an important part in nurturing and improving this important village asset. The Hall’s Happy Helpers also make an important contribution and lighten the load of the committee.

However, I’d like to particularly call out Deb Spinks’ contribution. Retiring from the committee this year, she’s outlasted Ralph by a year. Deb has agreed to join the Hall’s Happy Helpers, so I’m hoping we see her and Ralph behind the bar at some of our future events. The earliest record I could find for Deb and Ralph being on the committee was 2006, so that is at least 35 years of combined service. Thank you.



Would You Like to Hire the Jubilee Hall?

Hall hire is £12 per hour for Whaddon residents; £18 per hour for non-residents.

Chairs and tables can be hired separately plus speakers and mood lighting are available for use upon request. In addition to hire costs, there is a cleaning charge for one-off bookings.

All proceeds raised from hall hire and events goes towards the upkeep of this much loved and much used space and your continued support is very gratefully received and very much appreciated.

Please e-mail: whaddonvillagehall@gmail.com for more details.



You all know that we meet on a Monday, at 7.30pm in the village hall. You may not know that we have a wonderful Musical Director: Rob Parker, and an extremely talented accompanist: Craig Greene. You possibly do know that we are always keen to encourage more members to join us, to keep this valuable community choir going. I had to think hard about what Chase Choir brings to Whaddon's community not so long ago, because we needed some short-term financial help whilst we recruit new members.

We applied to Elmer's Charity, which supports community projects, as well as individuals, in Whaddon. So what does Chase Choir bring to Whaddon? And how can Elmer's help?

Well, the physical and psychological advantages of being together in a group, engaged in a practice which exercises vocal chords, lungs and brain, all at the same time, is well-documented. Add to that the improvement in mental wellbeing that comes with being part of a choir: singing in a choir benefits individuals and several of our members have remarked how coming to choir each week has helped them through some very challenging times.

We also support St Mary's Church by singing at some of its significant services. We are available to support at weddings and funerals and have done so a few times now. We have put on concerts at the village hall regularly for many years, partly to raise money for charity, but also in the knowledge that these events bring our community together, villagers and friends, to spend time together, enjoying listening to a wide variety of music and being part of a supportive friendly society.

So, a choir benefits both a community and its individuals via the gift of music. It's really not rocket science, and fortunately for us, the Trustees at Elmer's Charity thought the same, when they agreed to give us a very generous grant to help us continue meeting, rehearsing and performing, whilst we do everything, we can to boost our numbers and ensure the future of Chase Choir. We'd like to thank them very much for having faith in us.

It would be wonderful to be able to report back to Elmer's Charity at the end of the year and confirm to them that their belief in us and what we do is indeed valuable to Whaddon, and that their generosity was justified. I'd love to be able to tell them that our numbers have increased, and we are now secure for the future.

Do you like singing? Then come and join us! It really is as simple as that. No interviews. No auditions. You'll be surprised how fantastic you feel after a couple of sessions. We sing, we have fun, there are lots of giggles, we're tested (just enough!) and we're all good company. Your first session is free and after that, it's just £5 per session. If you'd like to know more, or fancy coming along and giving it a try, contact Marianna on 01908 503194. Or surprise us and just turn up on the night! You'll be very welcome.

For further information about Elmer's Charity, please contact Graham Stewart or Derek White who are Whaddon Trustees. The charity extends to Nash, Beachampton, Maids Moreton and Calverton.

Children's Pyjama Appeal

Please help by contributing a brand new pair of children's pyjamas for this worthy cause. All ages from newborn to 18 years of age are needed.

Collection point is **The New Lowndes Arms Public House** and donations are gratefully received from now until **15th September 2024**.

Peaches Goyen who works at the pub, is a huge supporter of children's charities and works hard throughout the year on their behalf. She will ensure that all donations are passed on to the charity shortly after the closing date and thanks the village for all support given.

CHILDREN'S HOSPITAL PYJAMAS
SPREADING LOVE THROUGH COMFORT
CHARITY NUMBER 1185730

PYJAMA APPEAL!

• WE ARE A COLLECTION POINT •

Donate a brand new pair of pyjamas for a poorly child in hospital this Christmas!

Children's Hospital Pyjamas are a UK based charity that collects donations of brand new pyjamas for children aged from newborn to eighteen. These donations are then shared between local hospitals, hospices and women's refuges.

HOW CAN YOU HELP?

Please donate a brand new pair of pyjamas. Drop them into us. We cannot take used pyjamas.

HOW? Bring in a pair of PJ's and we will forward them on your behalf.

WHEN? From **February 2024**
To **15th September 2024**

WHY? Because no child wants to be in hospital at Christmas, and if they have to be, they want to be wearing brand new cosy PJ's!

Follow us on our Facebook, Instagram and Twitter pages to see us delivering your PJ's x
f Children's Hospital Pyjamas | @childrenshospitalpyjamas | @CHPyjamaCharity

SAVE THE DATE

Celebrating 80th Anniversary of the D-Day Landings

Thursday 6th June: **Beacon Lighting on Windy Ridge (6.30-9.30pm)**

Join Whaddon in Celebrating
the
**80th Anniversary of the
D-Day Landings in Normandy**

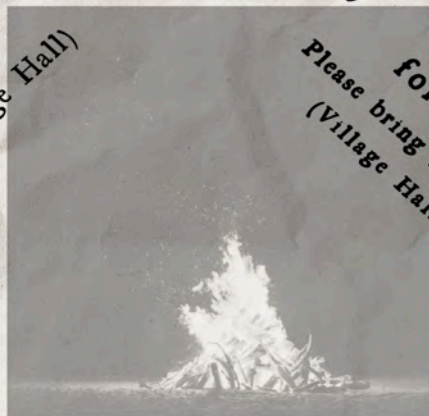


Beacon Lighting on Windy Ridge

(the fields behind St Mary's Church,
from where the historic decoding was transmitted)

RAFFLE
(Proceeds will go to the Village Hall)

PICNIC
for Friends and Family
(Please bring food/drinks/chairs/small tables
Village Hall toilets will be available)



Thursday 6th June 2024

6.30pm - 9.30pm

Free Entry - We look forward to welcoming you all.

On the 6th of June 2024 it will be the 80th anniversary of the D-Day landings of WWII in Normandy. The village of Whaddon played a huge part during WWII. Being the home of MI6/SIS section eight, it would have been a busy place indeed. The Head Quarters being situated in Whaddon Hall. There were two wireless stations in the village. These stations dealt with the wireless traffic of MI6/SIS agents in the field, also for the first two years of it's existence Special Operations Executive (SOE) and the distribution of what was known as "Ultra".

"Ultra" was the result of decrypted enemy wireless traffic by Bletchley Park (BP). This would then be analysed, and decisions would be made as to who should be able to see this information and would benefit most. Very few people knew of "Ultra" and any action taken from the results of "Ultra" there would have to be an alternative source of information. Such as a spotter plane or results of photo reconnaissance for example. Anything to convince the enemy we were not reading their traffic. In fact there were times when no action would be taken on certain intelligence, just to keep the secret safe. "Main line station" (situated behind Whaddon Hall) handled the agent traffic and occasional "Ultra". Where as "Windy Ridge" (located behind the village Church) was "Ultra" only. All of this traffic would have been encrypted before being transmitted in Morse Code to the various theatres of war. Both of the stations would have been a hive of activity.

On June the 6th this year there will be an amateur radio station operating next to the remains of what was the "Windy Ridge" station. Using either original or replica equipment we will be making contacts throughout Europe and maybe further if conditions allow using Morse code commemorating D-D 1944. Our replica WWII wireless station call sign "GB1SOE" has been in existence for a number of years and is run by my colleague John Pether (personal call sign G4JGG) and myself. We have a following throughout Europe.

Please come along for a chat about the history and equipment. There is also a small display of relative items.

We hope to be on air into the early evening.

Peter Davies.

Personal call sign MOPJD



“WHADDON’S WAR EFFORT”



**JOIN WHADDON
SCHOOL
SUNDAY 5TH MAY
12:30PM
FOR THE MAY
FAYRE**



Keep up to date by following on Facebook “Whaddon May Fayre”



Neighbourhood Watch Whaddon

YOUR LOCAL CO-ORDINATORS		
Graham Stewart	2 High Street	Tel: 01908 501973
Peter Beckwith	6 Old Manor Close	Tel: 01908 503194
Sally Green	Bellsbrook, Church Lane	Tel: Ex -directory
David MacIntyre	2a Vicarage Road	Tel: 01908 867836
Howard Jones	8 Ladymead	Tel: 01908 501871
Sally Telford	4a Stock Lane	Tel: 01908 336960
Pauline Winward	1 Whaddon Hall	Tel: 01908 502559

Important information from the Thames Valley Police -Neighbourhood Alert.

We all hope that the weather will improve as we move towards the spring months so please see below a few hints and tips on keeping your bicycle safe and secure when you go out and about.

1. Fit a good bike lock, such as one with a Sold Secure rating, and always attach your bike to something secure.
2. Always lock your bicycle, even if you are only leaving it for a couple of minutes.
3. If you have quick-release wheels or parts that are easy to remove, lock them up as well or take them with you.
4. Have your bike's frame security-marked or etched.
5. Keep your bike in a secure garage or shed when at home.
6. Register your bike with schemes such as Immobilise.
7. If your bike has been stolen, report it to the police on 101 or visit the online reporting tool. Link below.

www.thamesvalley.police.uk/ro/report/ocr/af/how-to-report-a-crime/

NEIGHBOURHOOD WATCH






Under current legislation, the riding of **privately** owned e-scooters is illegal on roads, pavements, cycle ways and any other public area - this is defined under the road traffic act 1988. E-scooters are also covered by the same legislation as motor vehicles and therefore subject to the same requirements of MOT, tax, licensing and specific construction regulations. It is not currently possible to get insurance to ride privately owned E-scooters in public, meaning there is currently no way it can be legal.

Privately owned e-scooters can be legally used on private land providing the landowner has given permission.

As you are likely aware, in some areas of UK there is a trial of government owned e-scooters, these e-scooters are legal to ride on roads and cycle paths, however you do still need a full provisional license to ride these. In the Bucks area, one of the government owned E-scooters brand is 'Zipp' and you can find them in various different places across the towns, these can be ridden legally.

If you use an e-scooter illegally:

-  You could face a fine
-  You could get penalty points on your licence
-  The e-scooter could be seized

We understand that many people are not fully aware of the legislation surrounding e-scooters, so Thames Valley Police will be looking to educate people found on private scooters used anywhere other than private land. Persistent offenders are likely to receive the same punishment as a driver of a vehicle would for no insurance, which is 6 points on licence, a fine and the scooter seized.

Please see following links for more information:

[Powered transporters - GOV.UK \(www.gov.uk\)](https://www.gov.uk)

[Advice on e-scooter usage | Thames Valley Police](#)

[Zipp Mobility](#)



Yet again, it has been a busy few months for our daytime group. We have welcomed a new member, managed to fit in a Christmas lunch and some amazing Christmas-themed sugar paste modelling thanks to Sue. At our last meeting, Jill ran one of her famous quizzes and we were all given our sunflower seeds for our annual growing competition.

We have also had some great discussions around voting on our national resolutions. Every year the WI selects areas on which to focus their national campaigning. Last year, it was clean rivers for people and wildlife (thewi.org.uk/campaigns). Subjects are put forward by local groups and a shortlist is drawn up. Then all groups are able to vote on the one which means the most to them.

This year they are:

1. Dental Health: with specific concerns around access for all to NHS dentistry.
2. Impact of poor housing: with specific concerns around the accessibility of affordable secure housing.
3. No to gambling advertising: pushing the government to adequately address that gambling harms caused by advertising.
4. Women in the Justice System: looking specifically at the imprisonment of women for non-violent offences particularly where they are pregnant or already have children.

More information on these topics can be found at:

1.bda.org and healthwatch.co.uk

2.Shelter.org.uk and generationrent.org

3.Gamcare.org.uk and caga.uk

[4. Womeninprison.org.uk](http://4.Womeninprison.org.uk) and prisonreformtrust.org.uk

We meet on the 1st Wednesday of each month from 2pm until 3.45pm. Come along to any meeting for £3 as a visitor and see if it is for you. Annual WI Membership is currently only £48 per year and gives you access to so much more, including an online learning hub and a regular magazine. The magazine lets you know what groups around the county are doing, articles on current campaigns and much more.

Please contact Jill Aitken on 01908 502781 or Mala Mulukutla 01908 387047 if you want to find out more.

Jane Wycherley (committee member)

St. Mary's Church Christmas Fundraising Social Evening

On the evening of **Friday 8th December**, the Jubilee Hall buzzed with activity as numerous ladies from the village came together for a fundraising event in aid of St. Mary's Church.

It was a fabulous evening filled with music, dancing, laughter and chat. It was particularly lovely to welcome many new faces to the event.



Raffle Prizes
K9LUG 6LUS62

At Whaddon Ladies Night
Friday 8th December

- £100 John Lewis Giftcard
- Meal for two at [The Crooked Billet, Newton Longville](#)
 - 2 x Annual Passes for Bletchley Park
- A one-hour dance lesson for 2 with [Chris Robinson](#)
- Meal for two excluding drinks at [Mowglis, Beachampton](#)
 - [Baby Alpaca shawl from Alpaca Evolution](#)
- [Elemis Superfood Pro-radiance booster Facial](#) at The Beauty Gallery, Newport Pagnell
 - [Emma Bridgewater Boxed large Cup & Saucer](#)
 - Liberty Pin Cushion
 - Set of Cheese Knives
 - Perfume set
 - Candle
 - Wine

All proceeds to St. Mary's Church

A highlight of the evening was the raffle, featuring generously donated prizes. Through the combination of raffle ticket sales and entry fees, the event managed to raise an impressive £416 for the church.

Overall, it was a fantastic evening that not only contributed to a worthy cause but also strengthened the bonds within the community. A memorable evening for all involved.



St Mary's Church, Whaddon - presents

LIVE
ACOUSTIC
EVENING



SATURDAY
16TH MARCH
DOORS OPEN 7PM
TICKETS £15

Spring into Whaddon

A very special music evening in the atmospheric setting of a beautiful 12th century country church

**CHASE
CHOIR**

**LOCAL
MUSICIANS**

**SPECIAL GUESTS
FEATURING
ISLA ST CLAIR**

FOR TICKETS CONTACT
DAPHNE WILLIS 01908 502088
OR PURCHASE ON
WWW.EVENTBRITE.CO.UK

Live Acoustic Evening - One Night Only!

One of Whaddon's favourite ex-residents, Karen Logan, is returning specially to sing at the Acoustic Music Evening at St Mary's on March 16th!

Karen would be first to admit that she is nothing like as famous outside the village as some of our other performers (e.g. Isla St Clair and Sam Attwater)! A very varied programme is planned and it promises to be an exceptional evening with everything from pop to folk, choral to comedy!

Your first glass of wine (or two soft drinks) is included in the bargain ticket price of £15 (£10 for under-16s) and, possibly for the first time at St Mary's, there will be a loo!

Daphne has tickets for cash sales (01908 502088) or log into Eventbrite if you would like to pay by card: <https://www.eventbrite.co.uk/e/acoustic-music-in-a-beautiful-atmospheric-country-church-tickets-794669336377>

Doors open at 7pm.

Huge thanks are due to our sponsors:

Fernfield Business Units

MacIntyre Law

The Weatherby family

Paul and Jane Sainthouse

Michael Graham Estate Agents for our event boards

Also, to all the performers, tech wizards and helpers who are donating so much time and effort on behalf of maintaining our lovely church!

Come welcome Spring into Whaddon!

Reflections From the Rectory

By Reverend Jacqueline Dove

The Reverend Malcomb Duncan writes daily night blessings (see Niteblessings on Facebook) and his blessing for the night we returned from South Africa, after my father's funeral was:

"Linger in Light. Let it warm your face, soothe your mind and lift your spirit. May God remind you that night passes but light is eternal. If you feel trapped in unending uncertainty and darkness, may God help you see that grace and love is unstoppable. Light wins."

This happened to be rather apt as I had had the opportunity to linger in light while flying above the clouds between Amsterdam and the UK on the last leg of our 24hour journey. I had a window seat and the sun shone on me. It struck me as I looked down at the impenetrable thick carpet of cottonwool clouds below, that only those above the clouds could see the bright blue sky, only those above could 'linger in light'. Sure, enough as the plane descended through the clouds as we came into land, the other side was very grey.

I'm aware there is a continuum of 'greyness' from being temporarily a-bit-down-in-the-dumps and extending all the way to feeling like you are totally 'done in' by your current circumstances. My time flying above the clouds reminded me that even when things seem and feel very grey, there is still blue sky above. Even when fear, despair and bitterness rule the roost – faith, hope and love still abound. When life feels grey, we hold onto hope knowing that the carpet of clouds blocking the sun is not permanent. This too shall pass is a good mantra for when everything seems grey, as we pray for the strength to keep on keeping on.

I also noticed as we approached the thick carpet of clouds that on close inspection there were occasional holes in the clouds, places where the sun could get through. I find the spiritual practice of being present to the presence of God/lingering in the light in the present moment can help me notice where the 'sun' is getting through. What has the potential to give me joy now, this very moment? It's often the very small things like spotting the snowdrops, pausing to truly savour a good cup of tea, being totally present to someone else. One of my favourite book titles is, Christ plays in ten thousand places by Eugene Peterson. When we linger in the light we notice Christ at play, in creation, in history and in community.

If you happen to be feeling grey, remember I'm only a phone call away – 01280 817828.

News from St Mary's Church



Hello everyone in Whaddon, or further afield,

My thanks to Rev'd Jacqueline Dove for writing the News from St Mary's for the last Whaddon Quarterly instead of me. I was very grateful to her for doing that, and indeed for officiating so beautifully at Peter's funeral at the beginning of December. Peter lived in Whaddon for more than thirty years, and the church was important to him. It was good for me to be able to say goodbye to him here, knowing that there is such passion and enthusiasm in the village now for making sure St Mary's thrives, both as a place of sanctuary and worship, and as the lovely, oldest building in Whaddon.

Christmas seems so far away now, and it certainly was an extremely busy time. Our Christmas Fayre was held, unusually, on a Sunday, and it was amazing! Thanks indeed go to everyone involved in any way whatsoever. My nephew was visiting, with his young family, and I have to say thank you on their behalf. I don't know which part his kids enjoyed most: the yummy cakes and drinks, the "Twelve Days of Whaddon", the stalls and games, or all the fun and chatter. I suspect, though, it was their visit to Santa's Grotto and the presents he gave them!

The traditional Christmas services took place as usual, including, to many people's delight, a Christingle service again. Many thanks to the Chase Choir for leading the congregation at the Carol Service, and for singing two beautiful anthems. Toddler Church is fun and thriving, thanks to Sally and Jacqueline, and their Crib Service was delightful, with all the children wandering around looking for stars!

It's wonderful to see Whaddon beginning to bloom again as the weather gets a little warmer. The daffodils, lovingly planted by Mark and his helpers (remember the WBPS in the Whaddon Show some years ago?) are opening up in various places, so we'll soon be enjoying them all over the village. There will be daffodils at the church, too, on Mothering Sunday, 10th March, with an all-age service at 10.30, where children will have the opportunity to hand out traditional posies for mums, grannies and aunties, and any other lovely lady who would like to come. Easter Sunday falls on 31st March this year and the service will be at 10.30. Sally will be doing something special for children again – I remember in awe how she told the Easter story last year and illustrated it using just one sheet of A4 paper ... I wonder what she has up her sleeve this year!

The rota of services for March and April is below. Please remember another very special date as well: we're holding an **acoustic concert in the church on Saturday 16th March**. Local musicians will be performing, as will the Chase Choir. We are thrilled that Karen Logan, our original Choir Leader will be coming down from Cumbria to sing, and delighted that Isla St Clair, folk singer and TV personality, will be performing for us as well. There is more information about the concert elsewhere in your Quarterly, and tickets are available from me, as well as on Eventbrite.

With good wishes to you all,

Daphne Willis
Churchwarden. St Mary's, Whaddon

St. Mary's Church, Whaddon – Services March & April 2024

Everyone is most welcome to all our services

Sunday 3 rd March	6.00pm	Deanery Lent Evensong
Sunday 10 th March	10.30am	All-Age Service for Mothering Sunday #
Sunday 17 th March	10.30am	Café style Church: Table Talk at the WhaddonChapel
Sunday 24 th March	9.00am	Traditional Service of Holy Communion
Thursday 28 th March	7.30pm	Maundy Thursday Candlelit Tenebrae Service at Nash
Friday 29 th March	10am 12 noon	Children's activities in Nash making Easter Garden Good Friday Reflection at Whaddon Church
Sunday 31 st March	10.30am	Easter Sunday Family Communion – children are very welcome #
Sunday 7 th April	6.00pm	Compline
Sunday 14 th April	10.30pm	Holy Communion
Sunday 21 st April	10.30am	Café Style Church: Table Talk at the Whaddon Chapel
Sunday 28 th April	8.30am	Traditional Service of Holy Communion (note time change for summer)

Keep the Church Alive Support the Big Five

***Save the date for the Rock Concert in the Church on
Saturday 22nd June 2024.***

St Mary's Church Rocks

SAVE THE DATE

Saturday 22nd June : Rock Concert at St Mary's Church

After successfully performing at The New Lowndes Arms in 2023, premier cover band V2 will be performing a fundraising gig in St Mary's Church. Yes, you read that right, a rock concert in the Church!

The band are hugely excited about bringing their music to the village and performing in such a unique location – a first for both the band and St Mary's.

Tickets will go on sale shortly and all proceeds will be donated to the Church. More details to follow in the May edition of the WQ, but mark your calendars **NOW**.



Shenley Park, Whaddon – Development Update

The best way to keep up to date on this major development site, is to log onto either Buckinghamshire Council (BC) or Milton Keynes City Council (MKCC) 'Simple Search Planning Websites' and search for 23/02180/AOP (for BC) and 23/01610/OUT + 23/03166/ADJ (for MKCC), where important updates should be posted as they occur.

The Supplementary Planning Guidance (SPD), which generated a very high response from Whaddon (and MK) residents during the 6-week public consultation period between August and September 2023, was finally discussed at the BC Cabinet meeting on 13th February. Cabinet Members, as expected, approved the Officers' recommendation to adopt the document, which now sets out the Development Principles, and paves the way for Crest Nicholson to amend their, currently on hold, planning applications and re-submit them to both BC and MKCC, at which time residents will hopefully have the opportunity to make further comment during the expected public consultation period.

When re-submitted, the amended plans should better conform to, and reflect the principles required within, the now adopted SPD, because the premature Crest Nicholson application differs considerably in some of its detail - especially the design and route of the link road from the A421 to the H6 Childs Way, and the closure of Shenley Road with its downgrading to a cycling and walking route, with the possibility of a future dedicated bus only lane. However, before this occurs, WPC understands that considerable further traffic impact assessments are required by the developers - and indeed the determining authorities - who must update and finalise their own traffic modelling databases, enabling them to properly consider the full traffic implications of this major development.

During the debate, Cllr John Chilver, one of our three elected local members, who is a portfolio holder within the BC Cabinet, expressed his support for the SPD, but also at WPC's request, reminded members of Whaddon residents' concerns, which he said were likely to continue through the ongoing planning application process. Cllr Peter Strachan (planning and regeneration portfolio member) gave a public assurance and assured members that Whaddon's outstanding concerns would be listened to and taken very seriously, with an official response being delivered, but he gave no indication whether or not any future changes would be considered, or better still, actually made!

For those wishing to see the now adopted SPD and proposed Development Framework Plan, please visit:

<https://buckinghamshire.moderngov.co.uk/ieListDocuments.aspx?Cid=337&MId=18268>

Scroll through the lengthy list to Item 15, open the Appendix 1 document and then turn to pages 20/21 to see the plan and description.

For those wishing to watch and listen to the 13 minute debate within the BC Cabinet Meeting, please visit:

https://buckinghamshire.public-i.tv/core/portal/webcast_interactive/850746

and watch the webcast by clicking on the blue arrow at Item 15 Adoption of the Shenley Park Supplementary Planning Document.

Milton Keynes City Council's response to the SPD consultation. Prior to the SPD being adopted MKCC submitted an 8-page response (dated 27th Nov) following BC's invite to comment as an adjoining Local Authority. Part of this response from the principal planning officer is worth recording below, as this tends to mirror many of the WPC objections, which sadly have been ignored within the SPD, or are being left to the detailed (reserved matters) planning application stage, which will follow after the

outline application has been approved. (the full response can be read on the BC planning website for 23/02180/AOP under - documents - Milton Keynes Council) "Milton Keynes City Council (MKCC) originally objected to the proposed allocation through the Vale of Aylesbury Local Plan (VALP) examination in 2019, due to the process of site selection and the potential impacts it could have upon Milton Keynes if not adequately mitigated. At this point, MKCC wishes to raise concern with the submission of the application in advance of the adoption of the SPD, with the SPD considered to be key, material consideration in informing your assessment of the proposals. MKCC strongly objects to the application for the reasons as set out in this letter and requests full consideration of these matters in the assessment of the proposals. An objection is raised on the following grounds..."

The response then includes mainly highway; access; traffic; connectivity. But also Ecology; Landscape; Urban design; Infrastructure Impacts and Drainage objections and the reasons for MKCC's objection to them.

Summary :

To clarify, MKCC wishes to strongly object to the scheme on the matters as set out within this response. The information provided in support of the proposal is inadequate and fails to reflect a comprehensive strategy for the site that should be established through an adopted SPD. In the event of planning permission being granted the financial contributions as set out in this letter - (£1,587,000.00 to facilitate an extension to the current Route 8 bus service which serves existing residents to the east of the boundary, and £3,410,412.00 to provide primary care facilities to the residents of the development) must be secured so as to mitigate against the impact of the development on infrastructure and services within the city boundary. MKCC also requests that the impacts of the construction phase, should the application be approved, are adequately mitigated, particularly in relation to noise and dust effects, as well as construction traffic and associated HGV movements through the city. As well as the above objections raised against the application, MKCC wishes to raise concern with the Environmental Statement submitted, and considers that it is based on inaccurate and inadequate evidence.

As outlined above, the Transport Assessment is considered to be significantly flawed and based on outdated and inaccurate information, methodologies and associated analysis. As a result, it is suggested that Buckinghamshire Council is not in a position to establish the likely significant effects of the development proposed, and determine the application on the basis of the Environmental Statement presented. It is expected that the detailed comments as set out in this letter are given full and serious consideration. It is critical that the interests of the existing residents of Tattenhoe Park and Kingsmead are properly safeguarded, and that the impact of the proposed new development on Milton Keynes is appropriately mitigated.

MKCC, following concerns raised during their own planning application consultation (WPC included), sought legal advice which recommended that MKCC must consider the whole application area, rather than just the access points that fall within their authority area. This legal advice was discussed in MKCC committee on 7th December, and because the development impacts both BC and MKCC areas, MKCC should consider the development as a whole and not just the access elements that are located within the MK district.

The accepted legal advice stated:

(iii) "One LPA liaises with the other to ensure that they understand the overarching position prior to determination, and whichever authority considers the application first, if it resolves to grant permission it should be contingent on the other authority also granting planning permission."

So, it appears that MKCC officers will continue to liaise and collaborate with BC in a proactive way, and like BC, MKCC will enter into a Planning Performance Agreement (PPA) to facilitate the management

and progress of the application.

And, a final thought:

Whilst it is extremely difficult to fully understand what is happening - perhaps even behind closed doors? - it would appear that MKCC are playing very 'hard-ball', and negotiating planning gains/improvements/S106 financial contributions etc. with BC, before an outline application can be agreed and approved between them. Agreement with MKCC is something that BC must achieve if they are to meet their required housing allocation within their Local Plan, and if this planning application is to be approved, and when reading between the lines, this may be why MKCC are insisting upon certain conditions and changes that may yet have to be agreed between both authorities and Crest Nicholson.

However, and by comparison, the WPC S106 improvements/possible planning gains on traffic/highways/connectivity and possible financial contributions/help to existing village infrastructure (Hall, Church, burial ground) etc. are currently being ignored by BC, or are being purposely pushed back to the later detailed planning application stages, and importantly, only after the outline application has been agreed and approved by the two adjoining and decision-making authorities!

It might be unfair to suggest, but it would appear that BC are more concerned about placating MKCC and their local residents in Tattenhoe Park and Kingsmead (presumably to ensure and capture their support/agreement to this major minimum 1,150 house and commercial development), rather than working with their own residents in the small community of Whaddon to help overcome their well-held concerns, by creating satisfactory and acceptable solutions for them!

I am reminded about an old proverb, "What's good for the goose is good for the gander", about equal treatment and specifically warning against double standards, but perhaps I'm wrong?

Whaddon Planning Snippets

As this copy goes to press, these are the latest updates on old and new planning applications. Full details of these and other recent applications can be viewed on the Buckinghamshire Council planning web page at :- <https://publicaccess.aylesburyvaledc.gov.uk/online-applications/>

Just follow the instructions and enter the appropriate planning application number, before selecting the documents that you wish to inspect.

LOCAL PLANNING APPLICATIONS

23/03007/APP - Householder application for conversion of integral double garage into habitable space and changes to fenestration. Erection of detached garage and open car port - 16 High Street, Whaddon.

Outcome: application **APPROVED** on 22nd November 2023 with standard conditions.

22/00221/APP - Temporary siting of childcare nursery, enclosed outdoor play space and associated infrastructure - Thrift Farm Bletchley Road, Whaddon. And :-

21/04926/APP - Demolition of existing greenhouses. Erection of a childcare nursery, enclosed outdoor play space, landscaping and associated infrastructure. - Thrift Farm, Bletchley Road, Whaddon.

There has been a flurry of new consultation responses and revised submitted plans posted on the BC planning website from, highways, ecology, environmental health etc., all since the WPC response was made on 10th October 2023, but a final **decision** on both applications is still **awaited**

23/02180/AOP - Outline application (with all matters reserved save for "access"), for a Sustainable Urban Extension comprising residential development of up to 1,265 dwellings etc.... at Shenley Park, Whaddon.

and

23/01610/OUT - Outline application to MKCC authority (matters of access to be considered, with matters of layout, scale, appearance and landscaping reserved) cross boundary with Buckinghamshire LPA (application reference 23/02180/AOP) for a Sustainable Urban Extension comprising residential development of up to 1,265 dwellings... etc. at Shenley Park, Whaddon.

Please see a separate article within this edition of W.Q.

Although the SPD has now been approved it is unlikely that a final decision will be made on the 'paused' Crest Nicholson current planning application until much later this year. Expect a revised outline planning application to be submitted, at which time, a further public consultation is expected to occur, in order that interested parties can make their views known.

OTHER MATTERS

The Oaks Farm, Stratford Road - Proposed Solar Park Planning Application.

WPC have been informed by the applicant Innovas that: *"The project is currently paused currently and for the foreseeable. As discussed, the intention will be to provide Councillors with a presentation post submission.*

At this time, please exclude the matter from the 14th of March agenda, as we do not envisage submitting

in the interim period.

A reason has not been given by the applicants for the delay, which could relate to access or landscape issues etc., but use of the word 'foreseeable' is interesting so watch this space.

WPC will advise residents when and if the applicants attend a Parish Meeting in order that any questions can be answered.

A421 Study - Ongoing by Bucks Council.

Several residents have asked about this ongoing Bucks Council Study, which is looking at the future of this congested road. The first workshop was attended by WPC in September 2023, when councillors expressed serious concerns about capacity, Bottledump roundabout, Shenley Park (and the new access roundabout), the link road to H6 Childs Way and dualling at the MK end, and likely level of future development.

The second November workshop was postponed, and BC now advises all affected parish and town councils that even more time is required to ensure that they have a robust evidence base, in order that additional testing/analysis of potential options can be better understood when considering the long term effects on traffic flows.

BC now expects that the next workshop will not be held until late Spring 2024.

Eventually, once all investigations have concluded, negotiations will commence about how, when and which priorities can be delivered, paving the way to submitting funding applications to the Government, enabling any works to proceed etc.

The initial meeting was far from encouraging and 'Infrastructure before expansion' and improvements to the A421 looks improbable before the Shenley Park development takes place - apart from the possible dualling between Bottledump roundabout and the new access roundabout, the need for which has yet to be determined by further traffic impact studies etc.

When Gravel Pits Surrounded Whaddon

The auction of two plots of land in Whaddon at The Bell Hotel in Winslow in April 1921 was the subject of a Prospectus with a very interesting map, as John Mortimer discovers.

THE YEAR 1921 is just out of reach of living memory but even then Whaddon was far different to today's bustling habitat.

A map enclosed with a Prospectus for two plots of land (38 acres in all) bordering the Nash Road shows how different life was then. But in those days, even 'top' people made 'typo' errors. The map is titled: Valuable Glebe Land in the "Vicarage of Whaddon" for sale by auction by Messrs Geo. Wigley & Sons. The map shows the Coare's Almshouses at the top of Church Lane, and the Vicarage at the far end of Pink's End, now Vicarage Road. For the vicar, the Rev. William Edward Dixen, that would have been a fair 10-minute trek to St Mary's on a dark night or a snowy winter's day.

The document reveals many an "Old Gravel Pit" dotted around the village, bordering Nash Road and Stock Lane. With precious little mechanization available in 1921 - the year pneumatic tyre inventor John Dunlop died - the gravel pits, known as 'dry pits', were worked by men with picks, shovels, horse and cart with wooden wheels. Men hand screened the aggregate to produce building sand, hogging and coarse gravel.

With the increase of road traffic gravel became vital for road construction while sand from behind Church-hill Farm was used for mortar in house construction. A public house (PH) is shown in Pink's End, but not the Fox & Hounds in Stock Lane, or the Haunch of Venison (late The Lowndes Arms) from which a track led to "Church-hill Farm" where another track led to Barehill Farm, adjacent to the two Lots up for sale. At the far end of the High Street, two Lodges nestled close to the road near entrances to Whaddon Hall with its distinctive "Ice house".

In those days, the Chapel held prominence in the High Street; two very large buildings held court behind it, while Whaddon itself was surrounded by three woods: Thickbare Wood, Busheyclose Spinney and Oldland Cavert off the road to Calverton.



Whaddon's Wonderful Watchmaker – Part 1

Have you an old pocket watch stored in your loft? If so, examine it carefully. Is it a Gardus? If so, most likely it was made in Whaddon. Yes, Whaddon. Because nearly 170 years ago skilled watchmaker William Gardus lived in Church Lane, as John Mortimer reveals.

SOME years ago, in August 2018, I wrote briefly in *Whaddon Quarterly* about William Gardus. I vowed to return to the subject at a later date. Why?

The prospect of a nineteenth century watchmaker settling down in Church Lane in the north Buckinghamshire village of Whaddon seemed to be a subject just too intriguing to lay aside.

And then, out of the blue, in February 2021, in the Covid 19 pandemic, I received an email from Russell Page. Russell requested my help. And in doing so he brought William Gardus to life again in my mind.

Russell, in his search for information about a long-distant relative, William Gardus, had seen a reference in *Whaddon Quarterly*. And, in making contact, he included some interesting images, three included here.

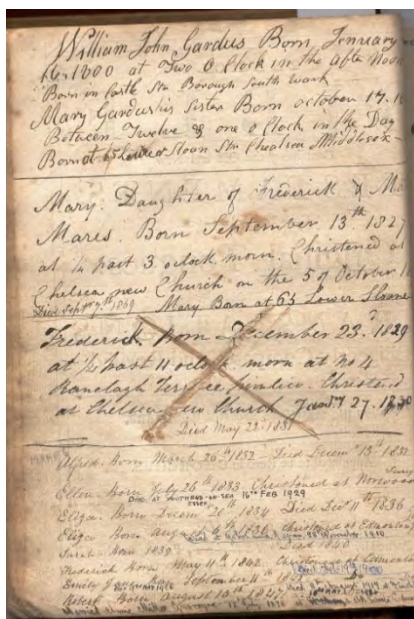
Russell wrote: "Our knowledge of the Gardus family is scant, as we are descended down the female lines. It would appear that William was a great uncle, as opposed to a great grandfather.

"There are several records of his wealth at death; indeed, you mentioned it in your article. So, one hypothesis is that he retired to Whaddon. I understand his wife may have been wealthy too.

"His watch (**right**) is inscribed with his signature but is stated as being London. The watch would appear to be No. 200.

"From a perfunctory search of watchmakers, I chanced upon an article elaborating on why watchmakers set up shop outside larger metropolises: landed gentry and farmers in the 19th century were

becoming wealthy with cash to spend. Market towns became centres of consumerism – go to market, sell a cow and come back with a watch.



"I am completely unfamiliar with Whaddon. Whaddon would appear to be nowhere close to a market town of use to a watchmaker, so why should William set up there is a mystery; or indeed why his watches should be marked as London. The watch case is thought to be made by James Davis of Cheapside; this adds to the London connection. "The reason we have a Gardus watch, coupled with my interest in William Gardus of Whaddon, is that we are related – the watch is an heirloom. The Gardus family bible (**left**) resides with my grandmother; his watchmaker's tools are with a distant cousin in Australia – probably with another of his watches. And my Great Aunt's middle name was Gardus, as was her father's (my great grandfather). There are two other

known fob watches in the family, but they are probably of much later mass-produced vintage.

"All of which brings the focus of attention momentarily to William Gardus. With an estate valued then at £4,000, he was a very wealthy man. Not only did he leave £500 each to George and Maria King, but he left £500 to his sister and the same to his housekeeper to whom he gave also his cottage in Whaddon.

“How did Gardus gain his wealth? Possibly he inherited some from his wife, Charlotte, but perhaps he was also a very successful watchmaker, even if not well known? But that is a story for another day.”

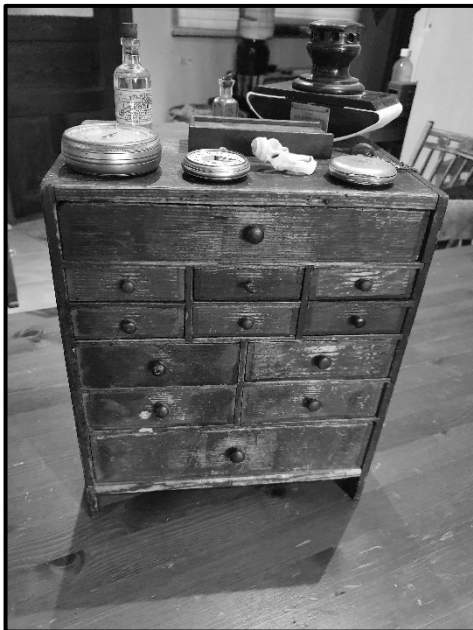
Valued at £1,500-£2,000

To produce a pocket watch in those days demanded great manual precision. As well as more than a cursory glance towards mathematics! So, to produce his design, William Gardus would need specialist tools.

The first pocket watch appeared some 300 years earlier from a German watchmaker, Peter Henlein in 1510. Using the then recent advancements in mainsprings, Henlein created a smaller design not previously possible; a timepiece so compact it could be worn.

As for the Gardus watch, Russell notes: “Robert Loomes, the watchmaker who repaired our watch, reported: “A pocket watch like this in a jewellery shop would cost between £1,500 to £2,000. If you wanted somebody to make a pocket watch like this for you from scratch (bespoke) it would now cost between £50,000 and £100,000.”

Added Robert: “Watchmakers’ tools are scarce; they are usually dispersed when someone dies. Also, you might not know it, but the Gardus watch uses a Duplex escapement. The Duplex escapement is a far better design than the lever escapement (used in 99.9% of watches after 1900). The Duplex is better because the escape wheel has two sets of teeth, one above the other. These separate the stop/start functions of the escapement – it stops and starts 14,400 times an hour. With those two sets of teeth, the tolerances can be tiny compared with a normal watch.



“The Duplex escapement was falling out of favour at the time your watch was made. Not that it was worse, but it took an experienced watchmaker to get it ‘just so’.

“Also, the manufacturing costs of the escapement parts were higher. Given that W. J. Gardus was making watches at the latter end of his life, then this would make sense; he would have known from experience that Duplex was superior and would continue to use it.

“However, do not confuse the English Duplex watch with the American design. English watches were earlier and far better.”

Russell can vouch for the authenticity of the toolbox (**left**), while admitting that more recent additions reflect its ongoing use and utilisation.

Russell comments: “When my great grandparents passed away, the estate was split up; a significant amount went to Australia – presumably shipped in large boxes along with other items of furniture.”

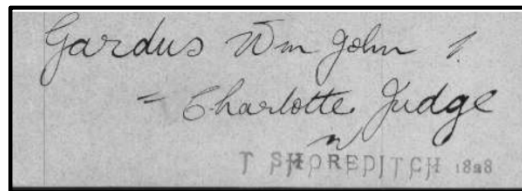
Robert concedes: “It (the toolbox) is certainly very old, but I must say much of what I see looks 20th century. Some items however, do look older, including some of the wooden hand tools and older pairs of pliers.”

Concludes Russell: “It would appear that down the decades and even centuries my ancestors have made use of the tools, and other items have accumulated over time.”

Nineteenth Century Toy Boys

Back in Whaddon, there may have been ‘toy boys’ in the village in 1911; if so, they remained elusive. Not so half a century earlier.

At that time, William Gardus, a watchmaker from Chelsea, then in Middlesex, embraced Whaddon life with gusto through his wife, Charlotte (Judge).



Charlotte was the eldest daughter of Thomas and Ann (nee Baccus) Underwood – Underwood was then a popular Whaddon surname.

When Thomas's brother, John Underwood, died (he had no children) he left a will. In that he made bequests to Charlotte and her siblings. Thus, to Thomas, b. 1776; Charlotte, b. 1778; Sarah, b. 1780; John, b. 1784; Edward (who at a later date became a publican), b. 1790; Martha, and Ann, b.1795; he left £20 each.

The Underwood's eight children arrived within a timespan of nearly 17 years. Mother Ann had a tough time; as did many women in those days. Four years after her last child, on 8th February 1799, Ann's husband Thomas died.

As far as Charlotte was concerned, some 10 years following her father's death she married a young local farmer from Shenley, namely George Judge. They wed in Whaddon's St Mary's church at harvest time. Born in 1790, George was 19 and Charlotte 31 when they joined hands in matrimony on 20th September 1809. George could then be seen as Charlotte's 'toy boy'.

Man and wife enjoyed many years together until George died. So, what happened then to Charlotte?

Well, it is probably reasonable to assume that Charlotte must have benefitted well from her marriage to George Judge, sufficient to attract Mr William Gardus as her new spouse. I suspect, though do not know, but William did not have much money in those early days.

For at this point, I am indebted to my Underwood family tree super guru, Janet Wyatt who explains: "George Judge, who was buried on 8th December 1827 at St John the Baptist church, Islington, left a will which implies George (and Charlotte) left farming life in Whaddon to become a brewer with William Bower at Badger's Yard in St John's Square, close to Brewer's Hall.

"George and Charlotte lived No. 7 Berkeley Court, Clerkenwell – very near to Watchmaker's Court.

"Charlotte and William Gardus married early in 1828; their marriage is recorded in *Pallot's Marriage Index*. This suggests their paths crossed in Clerkenwell, the centre of the watch trade."

This would explain firstly how a certain William Gardus appeared on the scene, and secondly, how it transpired that Charlotte married so quickly following the death of her husband, George, who was indeed a wealthy man who left a considerable sum.

This would explain also how Charlotte came to move to London. But when and how did Charlotte and William meet? And just how might their paths have actually crossed? All this is left to the imagination.

Next instalment of Whaddon's Wonderful Watchmaker – Part 2 will appear in the Summer edition of the Whaddon Quarterly.

Cultivate Your Very Own Piece of Paradise

(in Vicarage Rd!)

Are you ready to embark on a Green Journey?

Why Not Sign Up for an Allotment?!?

****Enjoy the Community Connection****

Join a vibrant community passionate about gardening and sustainable living.

****Grow Your Very Own Fresh Produce****

Veggies, fruits, herbs and more, for you, your family & friends.

****Enjoy A Peaceful Retreat****

To relax, rejuvenate and reconnect with nature.

****Share and Care****

Share gardening tips from seasoned enthusiasts and teach your children and others about food & nature.

- Large & Small plots available.
 - Water supply.
- Prices start at under £10/year!!!

To find out more, take a look around & discuss the possibilities, email clerk@whaddonbucks-pc.gov.uk or call 07891 887826.



Interested in playing Table Tennis on Tuesday evenings?

Beginners and experts welcome.

Contact Mark Carter:
magcarter@hotmail.co.uk

Mobile: 07754 790557

Email: davetaylorhandyman@gmail.com

HANDYMAN

Painting & Decorating
Building Works
Sheds & Fencing
Gardening
Machinery Repairs & Servicing
Home & Garden Clearance

DAVE TAYLOR

HANDYMAN

DAVE TAYLOR

Mobile: 07754 790557

Chumley Cottage, 36 Vicarage Road
Whaddon, Milton Keynes, MK17 0LU

Email: davetaylorhandyman@gmail.com

**Dave Taylor
Handyman**

COUNTRY FUNERALS

INDEPENDENT FUNERAL DIRECTORS

TOWCESTER



1 Sponne House Centre, Towcester. NN12 6BY

01327 351500 24HR Service

enquiries@countryfunerals.uk www.countryfunerals.uk

- Chapel of Rest ● Home Arrangements
- Memorial Headstones
- Funeral Plans

Tim Jenkins

Providing home and small business IT and AV services

**Need help with your email, mobile phone or Broadband?
Just changed from PC to Mac and would like some assistance?
Or maybe you have bought a Smart TV or sound system
and would like help setting it up.**

I understand just how confusing today's technology can be and I will visit you at home to discuss how I can help with the installation, set up or problem solving of your computers, mobiles, TVs, Broadband and wifi.

I am also highly experienced in small company IT and telecommunications problem solving and website building.

Call me on: 07814 721975

Or email me at: tjstechnologyuk@gmail.com

Website: www.tjstechnology.co.uk



Tring Market Auctions

Fine Art & Chattel Auctioneers & Valuers

For further information and viewing times please
contact us via the details below or visit

www.tringmarketauctions.co.uk

Free Auction Valuations

Total and Part House Clearance Specialists

Valuation for Sale, Insurance, Taxation,

Probate & Family Division

Tel: 01442 826446 Fax: 01442 890927

sales@tringmarketauctions.co.uk

Tring Market Auctions, Brook Street,

Tring, Herts HP23 5EF

www.tringmarketauctions.co.uk

Fernfield Business Units

Fernfield Farm

enquiries @fernfieldunits.co.uk

We are pleased to support the Whaddon Quarterly

*Homemade Jewelry / Cards
for all occasions*

Dress Making & Alterations

Ann Bennett

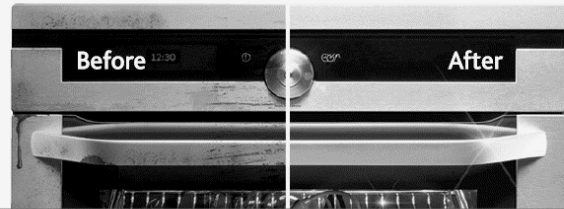


Stock Lane
Whaddon

01908 522292

07854 577402

ann.bennett259@gmail.com



Let Ovensclean take care of one of the most hated household chores!

"I'm simply delighted at how sparkly clean my oven and hob look now!
It really does look like the cooker is brand new again!"

Martin Belcher

- Ovens
- Filters
- Hobs
- Grills
- BBQs
- Ranges
- Extractors
- Microwaves
- AGAs

Call your local Ovensclean specialist Roger Butcher today on:

07800 888 271 or 0800 840 7127

www.ovenclean.com



All aspects of Tree Surgery and Arboriculture:

- Tree pruning & felling
- Hedge trimming
- Tree reports & surveys
- Stump grinding
- Firewood supply

- Free quotes & advice
- £5m Public Liability Insurance
- NPTC Qualified
- National Diploma Arboriculture

01908 506286 – 07533 371648

WWW.GREEN-TREE-SERVICES.CO.UK





... PLUMBING & HEATING ON OIL FIRED BOILERS...

- Join 100s of happy customers who rely on us to look after their appliance
- 8 years of experience in servicing and repairing oil fired boilers
- Work on all major boiler manufactures including:
Worcester *Grant* *Thermecon*
Potterton *Trianco* *Firebird*
and many more
- Service, repairs and new installations on oil fired boilers
- New oil tank installation
- OFTEC registered
- NVQ Level Two in Plumbing
- Very good customer feedback
- No Fix, No Fee
- Receive a £10 gift voucher for a retailer of your choice, as a thank you per recommendation
- Oil syndicates welcome



Contact:

07768 618 555

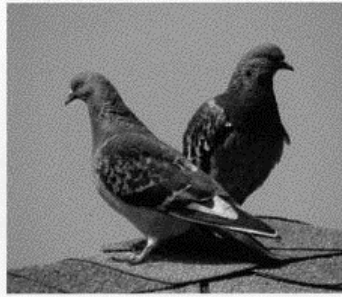
01908 313 216





CLEAR PEST MILTON KEYNES

**YEARLY CONTRACTS AVAILABLE
WOODWORM TREATMENTS ALSO AVAILABE**



RESIDENTIAL - COMMERCIAL - AGRICULTURAL

**ARE ANY OF THE FOLLOWING PESTS
A PROBLEM FOR YOU?**

- **MOLES**
- **WASPS**
- **RATS**
- **MICE**
- **BEES**
- **ANTS**
- **FLEAS**
- **RABBITS**
- **BIRDS**
- **FLIES**



Email: enquiries@clearpestmiltonkeynes.co.uk

**www.clearpestmiltonkeynes.co.uk
Tel: 01908 504405 Mob: 07771966377**

Proprietor: Roger Jaworski

Your friendly,
local printer...



HARLEQUIN PRESS Ltd

Lithographic and Digital Printing

Booklets	Event Tickets	Note pads
Brochures	Invitations	Order of Service
Business Cards	Invoice Books/Sets	Personal Stationery
Compliment Slips	Leaflets	Postcards
Delivery Notes	Letterheads	Programmes
Directories	Magazines	Timetables
Draw Tickets	Newsletters	<i>and Whaddon Quarterly</i>

Tel: 01908 506722

12 Bacon House Farm • Warren Road • Little Horwood • Milton Keynes • MK17 0PS
office@harlequin-press.co.uk • www.harlequin-press.co.uk



Buckingham Wills & Probate

Part of Bicester Wills Ltd

- Standard Single Will - £225
- Standard Mirror Wills - £325
 - Bloodline Wills - £625
- Lasting Power of Attorney
Property & Financial Affairs - £325
- Lasting Power of Attorney
Health & Welfare - £325
- Both Lasting Powers of Attorney - £500
 - Probate Assistance from - £1,500
- Pre-paid Funerals Plans - from £1,700

Gail and the Team
offer a friendly
estate planning
service

Home visits
no extra
charge!!

Come in and see us
The Garage, Castle Street
Buckingham MK18 1BS
or phone

01280 811201

lesley@buckinghamwillsandprobate.co.uk

www.buckinghamwillsandprobate.co.uk



ILEX COTTAGE
thornborough

Thank you to everyone who has supported Ilex Cottage, it's been a busy year made very special with so many local guests staying.

Two-bedroom character cottage in the centre of Thornborough, renovated to an exceptional standard, sleeps four.

- Ideal for short breaks and visiting family & friends
- Perfect for business travel with broadband & Wi-Fi
- Excellent reviews

Please feel free to get in touch to discuss individual requirements and for more details head to our website <https://ilexcottage.com> or Facebook page Ilex Cottage Thornborough.



Liz: 0778 8872717



ilexcottageathornborough@btinternet.com



Hair by
Louise

07305 069 410

louisebourns@yahoo.com



Hair by louise bourns



hair_by_louise_bourns

MOBILE HAIRDRESSER – Several clients in Whaddon

Passionate, salon trained, experienced stylist in all aspects of hair dressing

Offering you professional expertise in the comfort of your own home

Can give a free complimentary consultation to discuss your requirements and give an accurate price quote. A guidance price list is available upon request or see my Facebook Page

Skin patch test is required 48hrs prior to colouring treatments

Fully insured, BARBICIDE certified, safety measures in place including PPE

Experience you can rely on. People you can trust.

Whatever your legal needs, we've got the people, expertise and edge to deliver the winning result.



Commercial Property
Corporate & Commercial Law
Dispute Resolution
Employment Law
Family Law
Fixed Fee Consultations

Landlord & Tenant
Probate
Property Litigation & Disputes
Residential Conveyancing
Settlement Agreement Advice
Wills, Trusts & Estate Planning



Rachael MacIntyre



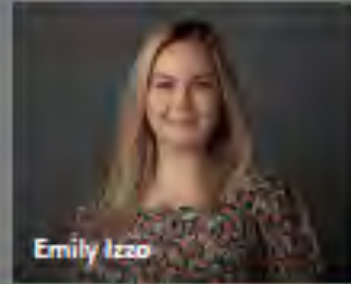
Elaine Foster



Simon Stone



Gemma Noble



Emily Izzo

Whenever you need a lawyer you know who to pick up the phone to!

01908 410844
mail@macintyrelaw.co.uk

Stony Stratford Office: 82-84 High Street, Stony Stratford, MK11 1AH

www.macintyrelaw.co.uk

What's On Whaddon?

2024 Dates for Your Diary

FRIDAY 8th MARCH: Tex-Mex Music and Food Evening. Pre-booked Ticket only. 7pm. Page 8.

THURSDAY 14th MARCH: Whaddon Parish Council meeting 7pm at The Chapel, Stock Lane. Page 6.

SATURDAY 16th MARCH: Live Acoustic Musical Evening at St. Mary's Church. Page 19-20.

FRIDAY 26th APRIL: Quiz Night at Jubilee Hall. Page 8.

SUNDAY 5th MAY: May Day Fayre by Whaddon C of E School. Page 14.

THURSDAY 9th MAY: Whaddon Parish Council meeting 7pm at The Chapel, Stock Lane. Page 6.

THURSDAY 6th JUNE: Beacon Event to mark 80th anniversary of the D-Day landings. Page 12-13.

SATURDAY 8th JUNE: Annual Whaddon BBQ and Social Evening. Page 8.

SATURDAY 22nd JUNE: St Mary's Rocks, Concert at St Mary's Church. Page 24.

THURSDAY 11th JULY: Whaddon Parish Council meeting 7pm at The Chapel, Stock Lane. Page 6.

More events coming to Whaddon soon. Watch out for further announcements.

Regular Events Across the Village

MONDAY EVENINGS: Chase Choir in the Whaddon Jubilee Hall. 7.30pm-9pm. No experience necessary. Please call Marianna Beckwith on 01908 503194 for more details.

TUESDAY EVENINGS: Table Tennis in the Whaddon Jubilee Hall. Contact Mark Carter on magcarter@hotmail.co.uk

FIRST WEDNESDAY OF EACH MONTH: Whaddon's Women's Institute 2pm in the Whaddon Jubilee Hall. Please call Jill Aitken on 01908 502781 for more details.

THURSDAY EVENINGS: Mindfulness based Yoga with Lauren in the Whaddon Jubilee Hall. 7.30pm-8.30pm. Please contact Lauren Bennett on lauren@thelollipopway.co.uk if you are interested.

