



# WHADDON QUARTERLY

May 2016

## **Any comments, queries or articles**

Please contact the Editor, John Mortimer, on  
01908 866988 or [johnmortimermsc@gmail.com](mailto:johnmortimermsc@gmail.com)

## **Advertise in the *Whaddon Quarterly***

Send your ad to the Editor as above

### **Advertising rates:**

For one year's advertising (4 issues):  
Full page £80 / Half page £40 / Quarter page £20  
Our Parish Clerk will issue an invoice for payment.

### **Whaddon Jubilee Hall**

For bookings: please contact  
Maria Cole on 07784 653031  
[mariacole1968@sky.com](mailto:mariacole1968@sky.com)

## **CONTENTS**

Parish Council Report.....	4
The Queen's birthday celebration.....	5
From the editor's chair.....	6
Clerk's Corner.....	7
Local Planning Matters.....	8 - 12
When is a pothole not a pothole?.....	13
St Mary's Church News.....	14 - 18
End of an era for Whaddon.....	19
Obituaries: Rowland Osterberg & Dylan Petch-Stewart.....	20 – 22
Glastonbury returns to Whaddon.....	23
Whaddon Independent Congregational Church.....	24
Women's Institute.....	25
Whaddon Night Owls.....	26
Evelyn remembers.....	28-30
Whaddon Book Club: Shakespeare's lost years .....	30 - 31
Whaddon First School May Fayre 2016.....	32 – 33
Neighbourhood Watch – Whaddon.....	34 - 35
Winslow Community Bus.....	36
Poem – The Swifts. Puzzle time.....	38
TOP SECRET: Latest news about the Tribute.....	41
Whaddon remembers secret WW2 Morse code messages.....	42
Chase Choir at Milton Keynes Festival.....	43

**Cover: Spring lambs in Whaddon. Photograph, John Mortimer.**

# SNIPPETS OF VILLAGE NEWS

Some items of local news fall between two stools – too short to make a self-standing article, yet of general interest but might otherwise not have been included. This page offers such an outlet. Contributions to the Editor are welcome for consideration, but it may not always be possible to include them.

- **At least one** house in the village sported Union Jack bunting in the front garden in celebration of H. M. The Queen's 90th birthday.
- **160 people** turned up for the Plan:Mk presentation by officials of Milton Keynes Council. The four options put forward as potential solutions to Milton Keynes' expanding population, suggest short-term needs cannot be addressed in isolation of long-term issues. **Full report p. 8.**
- **A BBC TV crew** in Jubilee Hall on Sunday 8<sup>th</sup> May helped commemorate the 75th anniversary of the first coded Morse signal sent in May 1941 from occupied France by a British Special Operations Executive – a message received in a temporary hut near Whaddon Hall. **Full report p. 42.**
- **The draft Aylesbury Vale Local Plan** will become public on 2<sup>nd</sup> June and consultation on it will take place in July and August. Meanwhile, AVDC will be changing collection dates for rubbish and recycling as from 7<sup>th</sup> June but advance warning of the new arrangements and dates will be given.
- **Helen Hickman** writes: "Thrilled to say that a stonking £642 was raised on 21<sup>st</sup> April at H.M. The Queen's Birthday Beacon. The money will go to the Whaddon Recreation Ground fund. A massive thank-you to everyone who took part!" **Full report p. 5.**
- **The first-ever** Whaddon pop-up pub, organised by the Village Hall Committee, took place on St George's Day, 23<sup>rd</sup> April – also the 400<sup>th</sup> anniversary of William Shakespeare's death. It was well supported, with over 70 attendees. The second one will be held on 21<sup>st</sup> May from 6.30pm. It will be interesting to see if the pop-up pub changes its name to The Village Inn, or better The Jubilee Inn.
- **Hikers and dog walkers** will be pleased to see a reclamation of Kennel Lane, thanks to Helen and James Meredith, carried out by Contractors MP & KM Golding Ltd of Cheddar, involving crushing, levelling and compaction of some 500m of track work in late March. The top section of the track is a public footpath (North Bucks Way) and the new surface now makes a smooth and safe passage to and from Stock Lane.
- **Returning officers** are expecting a large turnout for the forthcoming EU Referendum and are accordingly marshalling Presiding Officers and Poling Clerks for the occasion. This is likely to be in stark contrast to the poll on 5<sup>th</sup> May for the election of Police and Crime Commissioner for which there was just a steady trickle of voters (roughly four an hour) at Jubilee Hall.
- **In the wake of** this year's successful Annual May Fayre, Helen Meredith writes: "On behalf of the Friends of Whaddon School, I'd like to say a massive thanks to everyone who helped with the May Fayre on Monday, 2<sup>nd</sup> May. Final total is to be confirmed but we did very well, despite the awful weather. Thanks in particular to the ladies of the WI and everyone who helped with the floats, the Winslow concert band, the Whaddon Chase Choir, parents, teachers & governors and all the volunteers who helped set up, run stalls and clear away in the torrential rain. This is by no means an exhaustive list but special thanks are due to: the burger kings Pete Bush, Chris Hickman, and Sid Vincent to our judges Karen and Paul Logan, Paul and Linda Warren, and Chris and Helen Hickman; to Angie Joint who designed the posters; Alice Hain, David MacIntyre, Frederick Hayward, Pauline Winward and everyone else who has worked so tirelessly over the past few days. We haven't yet drawn the raffle as we were cut short by the downpour but we hope to do so on 21<sup>st</sup> May and will keep you all posted. Thanks again everyone!" **Full report p. 32-33.** ♦



## **PARISH COUNCIL REPORT SPRING 2016**

In the past three months, the Parish Council has been, as so often, pre-occupied with Planning Issues. This culminated in our response to the preferred options for site allocations in Milton Keynes draft plan. Planning Officers from Milton Keynes Council came to Whaddon at the end of March to discuss and elaborate on the four options. It was extremely well attended with 160 present, including residents from Nash and Beachampton.

The Parish Council response made clear unequivocally our preference for expansion to the east of the motorway and our opposition to breaching the Shenley Ridge or expansion into Whaddon.

In June, we shall see the preferred options of the Vale of Aylesbury Local Plan and will have the chance to comment.

Our brand new recreation ground equipment continues to be popular and we have now obtained a grant from the Buckingham Local Area Forum which will enable us to construct a new pedestrian entrance and crossing.

We had great concern for the future of the pub following rumours of permanent closure. I am glad to say at this stage it appears that it may be sold to the owners of the Eight Belles in Bletchley

We have received a report from Savills on the options for our field on Stratford Road, known as Constables Plot. We will consider the options.

Aylesbury Vale District Council is reconfiguring its refuse and recycling collections, following the commissioning of the County Council's new incinerator at Greatmoor and we will know the revised dates in June.

As I write, we are near the Queen's 90<sup>th</sup> Birthday, which will be commemorated by a Beacon to be lit at Coddimoor Farm with drinks and food on sale.

Following Pat Haig's resignation as a councillor, we have chosen Graham Hain to succeed her and I wish him a long and successful time in office. ♦

Billy Stanier

May 2016

## QE2 beacon bash sparks off £642

WELL OVER 100 Whaddon Villagers (actually 120, but there were a few "outsiders" as well) came to Coddimoor Farm, Whaddon on the evening of 21<sup>st</sup> April to watch the lighting of an "official" Beacon to celebrate HM The Queen's 90th Birthday.

The event was hosted by Chris and Helen Hickman who registered the Birthday Beacon, an event initiated by the CLA (Country Landowners Association), along with over 250 local communities.



The Whaddon Beacon was thus registered with the Pageant Master at Buckingham Palace, and in return an email was received with an attachment of a letter from Clarence House, penned by HRH The Prince of Wales, congratulating us all on our efforts.

This letter was read out just before the Beacon was lit at 8.30pm accompanied by a rousing 2 verses of the National Anthem and a "Happy Birthday" chorus sung by the Chase Choir (left below).

What a Beacon it was – built by Chris and Julian Grace – it burst into flames (above) and was an amazing sight at the highest point on the farm and looking across towards Nash, Silverstone and Daventry.

A Barbecue, Bar and Raffle did brisk trade and a sum of £642 was raised for Whaddon Recreation Ground.

A HUGE thank-you to everyone who came along - Royalists and Republicans alike.

And an ENORMOUS thank-you too for all the helpers on the night and to WPC for the sausages and Burgers for the Barbecue. Whaddon certainly ROCKS! ♦

**Words: Helen Hickman**

**Pictures: Jo Bush**



## FROM THE EDITOR'S CHAIR

Next year, Milton Keynes will be 50. It might be expected the next 50-year plan to be in place, a broad canvas of the future; an adjunct to the vision of first chairman Jock Campbell, who on 15<sup>th</sup> June 1967, saw the city as a "place for people".

But no. Along comes Plan-MK which should have been called 'Plans for MK', as it was more like four ad-hoc, piecemeal proposals that may or may not fit in with the new 50-year plan – when it comes. Not 'the way forward' that might be expected.

Times have changed. Milton Keynes Development Corporation is no more and the energy and dynamism of the past have evaporated. Despite this, MK is set to grow inexorably as its population expands by 50,000+ every 10 years. In 30 years, the total could be 400,000 – irrespective of the EU Referendum on 23<sup>rd</sup> June.

MK at its birth with wide boulevards and open spaces was hailed as the motor car's city. How the car takes its place in the next 30 years is a big question, quite apart from housing, industry, schools, medical resources and other necessities.

But MK Council is not the only organisation looking at the future of the city. I attended some lectures in March at Cranfield University held under the lofty title of *The Sustainable Mobility Revolution*, but really discussing driverless cars.

However, one speaker, Professor John Miles of Cambridge University and engineering consultants Arup, proposed a vision of MK served by four 'bullet' trains able to transport people from north, south, east and west perimeter points (such as Newport Pagnell; Brogborough; Stony Stratford, Bletchley or even Buckingham), These would swiftly transport occupants to the city centre, freeing up city roads.

The electrically-powered Bullets, with their rubber-tyred wheels, would speed at 120 mile/h in a roughly straight direction on special tarmac surfaces (not rails), removing car traffic from major trunk roads, like the M1, A5 and A421.

Professor Miles questions: "how do we get people out of cars for short trips in and around the city?" So, as adjuncts to Bullets, he visualises 'buses on demand' – small, 8 or 10-seaters picking up city passengers able to call up a bus using their iPhones, knowing its exact position using a "city motion map" with "high quality information you can trust". Today, 88 buses serve Milton Keynes, but 1,200 taxis!

In this same "bigger picture" pioneering driverless pods, will be coming soon to Milton Keynes city centre, as well as to be evaluated at Cranfield University.

Against this backdrop, Whaddon sits on the cusp of Milton Keynes, with all the associated advantages and disadvantages. Whaddon could even become 'a bargaining chip' between Aylesbury Vale District Council and Milton Keynes. For Whaddon, the motor car is likely to remain an important feature of life; one more likely to grow than decline. Will Whaddon become part of the "bigger picture"?

Meanwhile, closer to home, so to speak, readers will notice a few little tweaks here and there to the *Whaddon Quarterly*, such as Contents, page numbers, Snippets and a couple of reminiscences – memories of times past. It remains, as US President Abraham Lincoln said, "...of the people, by the people, for the people".

Deadline for the next issue is **NO LATER THAN** 1 August, please. ♦



# Clerk's Corner

**Helpful information from  
Whaddon Parish Council**

## **SIGN UP TO GET IMPORTANT INFORMATION AND UPDATES BY EMAIL!!!**

Recent communications and the presentation from MK Council representatives about the expansion plans for Milton Keynes has highlighted that many residents of Whaddon Parish are not getting up-to-date and timely information about very important issues affecting our Parish.

We have both the Vale of Aylesbury Local Plan and Plan:MK on the table at the moment; and both will have far-reaching effects on our community.

**SO SIGN UP NOW!**

**BE SURE OF STAYING INFORMED!**

**AND DON'T MISS YOUR CHANCE TO HAVE YOUR SAY!!!**

**You can also get your Whaddon Quarterly by email, and lots of useful notices and information; e.g., refuse collection delays, road closures, planning applications, etc.**

**Send a short email to [ParishClerk@WhaddonBucksPC.org.uk](mailto:ParishClerk@WhaddonBucksPC.org.uk) asking to be added to the list. We promise absolutely you will NOT be 'spammed' and your details will NOT be passed on or used for any purpose other than this one.**

**Date of Next Parish Council Meeting(s).** The next meeting(s) of Whaddon Parish Council take place at Whaddon Chapel, Stock Lane, on at 7.30pm on 12<sup>th</sup> May, 21<sup>st</sup> July, 8<sup>th</sup> September, and 10<sup>th</sup> November 2016. Please check the Village Notice Board at the bus stop to confirm these dates and the location, as they can be subject to change at short notice. All Welcome. ◇

Whaddon Quarterly

Editor: John Mortimer

Proofreading: Marianna Beckwith

Printer: NBR Printing Ltd., Galleon Wharf, Old Wolverton Rd, Milton Keynes MK12 5NL

## LOCAL PLANNING MATTERS

### **An update of Plan:MK**

Firstly, a big thank you to all approximately 160 residents who turned out for the 'Special Village Meeting' on 23<sup>rd</sup> March to discuss the very important Plan:MK issue.

Although the power-point presentation by the MK Council officers was found, by many, to be too generalised and did not focus sufficiently on Whaddon concerns, the specific questions asked during the two Q and A sessions were very enlightening.

Many of those present came away with the feeling that even if 'Direction 2 - East of the Motorway' was chosen as the preferred option, would MK Council able to progress it? This is especially so, as land that would be required has not yet even been properly evaluated by the Council, nor have the landowners been approached or the land promoted!

This left many attendees believing that Direction 1 (Whaddon and Newton Longville), or a combination of that and other options may be the most likely scenario when the 'Plan:MK Preferred Option' document is published for further consultation, later this year or early next.

Secondly, thanks to all 300 or so parishioners who signed the response form 'objecting' to Plan:MK Development Direction 1 (which includes farm land to the North and South of Whaddon) and 'supporting' Plan:MK Development Direction 2 (Land to the East of the M1 Motorway). This wad of documents was hand-delivered to MK Council on the closing day of the consultation period, together with the comprehensive Whaddon Parish Council formal response.

One slightly worrying aspect of the consultation is that our own Council, AVDC, said in their response to Milton Keynes Council: *"Our main concern, however, relating to Direction of Growth 1, would be that two parts of this option (specifically to the east of Whaddon (west Milton Keynes) and north of Newton Longville) have been reviewed and identified as potential growth options by Aylesbury Vale District Council as part of our Vale of Aylesbury Local Plan. Therefore there are potential conflicts with our Local Plan which may allocate one or both these sites.....and have potential to be allocated and to 'count towards' Aylesbury Vale's housing growth and needs."*

So, it would seem that both Local Authorities (AVDC and MKC) are potentially considering the same areas around Whaddon, although AVDC, to give them credit, also said: *"We would like to raise significant concerns regarding the landscape impact of Option 1. We would agree with the assessment of risks relating to this option, with regard to transport, landscape implications, impact on areas outside Milton Keynes and on existing villages. Specifically, development over Shenley Ridge and impact on Whaddon Chase. It is notable that landscape impacts are much less*



*significant in the other three options, and suggest that this should be taken into account when progressing the more detailed site assessments”.*

## **So, what happens next?**

AVDC Committees will discuss their 'Officer Recommendations' during June, and thereafter will publish a Draft 'Vale of Aylesbury Local Plan', for a public consultation period between 7<sup>th</sup> July and 5<sup>th</sup> September (just over eight weeks to allow for the holiday period).

This consultation will include a series of public exhibitions and a more streamlined on-line system for submitting comments.

**Your Parish Council will be attending a VALP Parish Seminar on 13<sup>th</sup> July, and will thereafter discuss the implications (if any) for Whaddon at the Parish Council meeting on Thursday 21<sup>st</sup> July. Please put this date in your diaries, because if Whaddon, or any part of the Whaddon Parish is chosen as a 'proposed' location for housing development then you will be able to 'learn more and have your say'.**

## **What can we expect?**

I am told that the next draft of the 'Vale of Aylesbury Local Plan' will include housing numbers, and on which 'generalised land areas' the homes might be built to fulfil Government housing requirements.

There is now a presumption and understanding that some Councils may be expected to 'make up' the unmet housing needs of adjoining Local Authorities (where constraints may make it difficult for those authorities to find appropriate sites), and in Aylesbury's case these are Luton/Dacorum and Wycombe/Chiltern/South Bucks.

However, what is still unknown is whether Local Authorities across the country will have to find even more additional sites to satisfy the unmet needs of the LONDON market!

No doubt AVDC are trying to calculate these 'unmet housing needs' and as part of their Local Plan work, sustainability exercises will have been undertaken on those 'preferred' development sites that have previously been promoted by landowners and developers.

We also understand that consultants are looking at the 'potential' of a new settlement in Aylesbury Vale (their current focus is on determining the potential landscape and traffic impacts of the most suitable locations).

But this option may not form part of the final plan which, after a final round of public consultation, will go before a Government Inspector at an 'Examination in Public' probably during March 2017, before being adopted around Summer 2017.

## **What about Plan:MK?**

As far as Plan:MK is concerned, both authorities are expected to talk to each other, so we can expect to see Milton Keynes Council's next round of consultation on their

'Preferred Option' or 'Combination of Options' towards the end of this year 2016, or early next.

Your Parish Council will, through the P.C. Village email list and on the Village notice boards, endeavour to keep you updated as both Local Plans move forward. If you are not already registered to receive notifications and wish to receive them, please email [ParishClerk@WhaddonBucksPC.org.uk](mailto:ParishClerk@WhaddonBucksPC.org.uk) requesting that your name and email address be added onto this ever-growing and important communication list. ◇

*Graham Stewart, Whaddon Parish Council*

---

## Looking for something different to do?

**Buckinghamshire's** biggest and best bike ride returns with three glorious routes, starting and finishing at Stoke Mandeville Stadium. Touring the scenic countryside, each route offers water stops and is equipped with marshals, first aid and support vehicles for your safety.

With the 2,000 capacity expected to sell out, cyclists are urged to enter early to avoid disappointment. Entries received by Wednesday 22nd June (subject to availability) cost £15 for adults and free for under 16s. Any remaining places are sold on the day at £30.

Alternatively you may wish to volunteer. Volunteers are needed at stages along the route to ensure riders know where to go and help minimise any potential obstructions. Volunteers will need to be available for an average of 2-3 hours. All marshals will receive a high-vis jacket, instructions and are welcome to pick up a packed lunch from Stoke Mandeville Stadium. Interested? Contact Jo Hall at [jo.hall@wheelpower.org.uk](mailto:jo.hall@wheelpower.org.uk) or on 01296 395995.

**Have you a relative** who lived in Buckinghamshire during World War I? Do they have an interesting story to tell of their experiences? The Centre for Buckinghamshire Studies (CBS) is planning to run The Great War Buckinghamshire Project and needs help to deliver it!

The project will tell the story of Buckinghamshire's servicemen and families in WW1 through interpretation of the collections held at the CBS alongside a range of other material held elsewhere. The project will bring together those individual stories for the first time and will publish them online.

If any of your relatives were from Buckinghamshire during The Great War and you would like their stories to be told, then contact CBS as soon as possible.

CBS needs volunteers to conduct research and build coherent pictures of individuals and their stories. Volunteers will be allocated individuals and families to research and will have to digitise their research for publication. Research takes place largely at the CBS but visits to museums and other organisations may be required. Training will be provided and travel expenses covered. A dedicated volunteer manager provide support throughout, and much research can be conducted at home if necessary.



For more details about volunteering or conducting research email [amos@buckscc.gov.uk](mailto:amos@buckscc.gov.uk). ◇

---

## WHADDON PLANNING BRIEFS

**Planning applications that have been decided or are currently being considered, since the last Quarterly publication, include those listed below**

**16/00526/APP.** Erection of One Dwelling. Land Adjacent to 2a Vicarage Road.

The target date for AVDC to determine this application was 19<sup>th</sup> April, but it is not clear from either their web-site or from telephone enquiries to the Council why this date was not met, and whether or not an 'extension of time' date has been agreed with the applicants. It may be that by the time you read this article (mid May), the planning department will have made a decision and if so, no doubt due to the amount of interest that this application generated (some 50 resident objections), the decision will be circulated on social media sites and via the WPC email list. As I write this article, it is evident that nothing (i.e. correspondence or internal consultee responses – highways, listed building/conservation area officer, etc.) has been added to the Council's planning web-site since Whaddon Parish Council submitted a 'further enquiry' on 29<sup>th</sup> March.

**15/04261/APP.** Whaddon Jubilee Hall. Single storey front/side and rear extensions, access ramp up to new entrance doors.

This application was approved on 4 Feb 2016, with a condition that the works shall be begun before the expiration of three years from this date.

**15/00716/APP.** Two new detached houses and car parking - Land rear of 2a and 2b High Street.

This application was refused by AVDC, but the applicants appealed the decision under Appeal no. 15/00094/REF. On 1<sup>st</sup> February, the Planning Inspector upheld AVDC's refusal decision and the appeal was dismissed, primarily on (a) the effect the proposal would have on the character and appearance of the area, and (b) the effect the proposed parking would have on highway safety. It is expected that the applicants will submit a third application, possibly for one large house rather than two, thereby hoping to reduce the 'scale and mass of the housing development', which the Inspector, in coming to his conclusion, said had a fundamental effect on the sensitivity of new buildings at the edge of settlements where rear gardens extend up to open countryside.

**15/03803/APP.** Removal of hedge on west boundary and replace with a close boarded fence with a pedestrian access gate. Fine View, Whaddon Hall, High Street.

Current Status: Pending consideration - Decision awaited. The AVDC planning website has not been updated since 23 November 2015.

**15/03799/APP.** Change of use of agricultural land with existing hard standing area to residential parking and erection of front gate (part retrospective) - The Cottage, Kennel Lane.

This application sought to regularise the change of use of the agricultural land to residential parking and proposed the erection of a front gate with the hard-standing enclosed by a new hedge.

AVDC considered that it would not be expedient to take enforcement action in respect of the use of the hard-standing for the parking of cars, and there would be benefits to be gained from the proposed hedge which would be provided along the north-western and the north-eastern boundaries of the hard-standing which would screen the parked cars from views across the fields. Given the particular circumstances of this case it was considered by the AVDC that the benefits to be derived from the proposal would outweigh the minimal impact on the character and appearance of the area and the AAL.

Subsequently, a submission of details was made on 19<sup>th</sup> April, for 'details of the proposed hedge for the north-eastern and north-western sides of the parking area on planning permission 15/03799/APP. It is expected AVDC will approve this by the end of June.

## **STOP PRESS**

**16/01298/AOP.** Outline planning permission with access to be considered and all other matters reserved for the erection of one detached dwelling. - Land to the rear of 2a and 2b High Street, Whaddon (see **15/00716/APP** above) Submitted just a few days prior to the Quarterly print deadline, this is the third application on this site, and because of its importance on the character and appearance of the area it will be discussed at the Parish Council meeting on Thursday 12<sup>th</sup> May. Any objections from residents should be submitted to AVDC by 16<sup>th</sup> May, but any comments received after this date should be 'taken into account' by the planners up until the application is considered by the appropriate planning committee.

The application is for one very large five bedroomed dwelling, and is in 'outline' form only, suggesting that the applicants are seeking to overcome the refusal decision of the Inspector's Appeal decision, and thereby testing the 'principle' of whether or not any form of 'back land development' is acceptable (i.e. on rear garden land behind the accepted linear pattern of existing village development that runs up to and adjoins open countryside), and whether in turn the impact of such development on the historic character of the Village should be allowed, The applicants have submitted no dimensions, elevations, or material detail whatsoever, which seems unacceptable with the site standing as it does, immediately adjoining the High Street Conservation Area.

**Please remember** that you can view these, or any other planning applications on the AVDC Planning web-site, by simply 'Googling':- **Planning >> Simple Search – Aylesbury Vale District Council** then type in the application number in the box provided, and click 'Search'. Open the documents and inspect the papers of interest to you. ◇

# When is a pothole not a pothole?

## Or, put another way: Potholes (roads & footpaths) and other repairs

Normally, your Parish Council carries out an annual 'Village Walk Round' with officers from Transport for Bucks (TfB) but, following a resource review at Bucks CC, the Area Maintenance Gang no longer exists. It will be replaced by a Minor Works Crew who will be undertaking both streams of work on a strict 'priority basis'.

Your PC has identified a short list of works. These were reported on the last Walk Round and have still not been attended to. The PC will be writing to ensure these are undertaken before the new arrangements come into force in June/July 2016.

As far as pot holes (right) are concerned, these now have to be reported on a special TfB telephone number or web link and, upon receiving notification, they will be classified as P1 through P4. Currently only P1 and P2 defects are dealt with on a "next day" repair programme. P3 and P4 are considered less severe and do not meet the intervention criteria through which a priority repair would be justified.



So, your Parish Councillors then asked TfB the same question that you are now thinking!! What does categorisation P1 through P4 actually mean? Below is their response!

### **Priority categorisation for defects within the road:-**

P1: 75mm depth 300mm or over in any with width with sharp edges – 2 hour response from order being raised.

P2: 40mm up to 75mm in depth 300mm in width with sharp edges – next working day response from order being raised.

P3: approaching 40mm in depth 300mm in width with sharp edges – 28 day response.

P4: potential works (general wish list for all non-essential works) no response time from order being raised.

### **Priority categorisation for defects within the footway :-**

P1: 75mm and over – 2 hour response from order being raised.

P2: 20mm and up to 75mm – Next working day response from order being raised.

P3: approaching 20mm in depth – 28 day response from order being raised.

P4: all non-essential works – no response time from order being raised.

**If you become aware of any potholes in the P1 or P2 category, please advise your Parish Council.**





# St. Mary's Church Whaddon

## REGULAR SERVICES May 2016

1 <sup>st</sup> Sunday	10.30 am	Family Service
2 <sup>nd</sup> Sunday	10.30 am	Holy Communion
3 <sup>rd</sup> Sunday	10.00am for 10.30am	Sunday Special - Contemporary Service. Tea & coffee & croissants beforehand
4 <sup>th</sup> Sunday	8.30 am	Said Holy Communion (Traditional)
5 <sup>th</sup> Sunday		Benefice service at one of the churches - venue to be notified

### OTHER ACTIVITIES

Tuesday	2pm	Post Office & "Tea on Tuesday" in Jubilee Hall
Tuesday	7.30 pm	Bell ringing practice – new recruits welcome
1st Wednesday	2.00 pm	Women's Institute in Jubilee Hall
3 <sup>rd</sup> Wednesday	7:30pm	Whaddon Night Owlers WI in Jubilee Hall
1st Saturday	10.00 am – 12 noon	Coffee Shop in church

A very warm welcome is extended to everyone who may wish to attend any of these activities.

### Dates For Your Diary.

Saturday 11 <sup>th</sup> June	2.00 pm - 4:30 pm	Annual Summer Fete <b>on School field</b>
Saturday 6 <sup>th</sup> August	10.00 -12 pm	Florrie's Coffee Morning 3, Church Lane. With thanks to Barry & Hazel Dudley.
Saturday 12 <sup>th</sup> September		"Ride & Stride". See below.
Saturday 3 <sup>rd</sup> October	10.00 - 4:30 pm	Open Day at St Mary's. Morning Coffee, Soup. Ploughman's lunches & cream teas served. You are also invited to bring gifts of produce to the church.
Sunday 4 <sup>th</sup> October	10:30 am	Harvest Festival
Monday, 5 <sup>th</sup> October	7:30 pm	Harvest Supper & Auction of Produce in Jubilee Hall

This year our ANNUAL SUMMER FETE will take place on Whaddon School Field on Saturday 6<sup>th</sup> June by kind permission of the Headteacher. There will be lots of fun and games for children with pony rides, hoop-la, treasure hunt, etc. as well as our raffle, cake, book and plant stalls to mention but a few.

There will also be ice creams and a Cola and Pimms bar. Woburn Sands Band will be entertaining us as usual and afternoon teas will be served. This is a wonderful opportunity to support the village church and have an afternoon of fun, so please come along and bring all your friends.

If you are able to help in any way please contact any member of the PCC. We especially need helpers at the village hall in the morning to load the chairs and tables at 10.00 am (this usually takes about 30 minutes), erect the gazebos and stalls at school and clear up at 4.30 pm.

If you have anything such as a bottle, tin or jar of anything which you can give for the Tombola, or plants, books, toys and cakes for these stalls, please contact Hazel Dudley (01908 505727) Clare Garland(01908 501732), Jo Bush (01908 749323) or bring donations to the school field between 10.30 am and 11:30 am on the day. We would also be very grateful for raffle prizes – please contact Pauline Winward (01908 502559 )

At the ANNUAL PARISH CHURCH MEETING in April there were some changes to the Parochial Church Council (PCC). A big thank you to all PCC members and sides persons for the time they give to support the church in so many different ways.

### The PCC

Hazel Hedges	Churchwarden.	Tel. 01908 501729
Jo Bush	Hon. Secretary.	Tel: 01908 503194
Barry Dudley	Hon. Treasurer	Tel: 01908 505727
David Spencer	Electoral Roll Officer.	Tel: 01908 502540
Frederick Hayward	Jubilee Hall Rep,	Tel: 01908 506083
Hazel Dudley	.	Tel:01908 505727
Clare Garland		Tel: 01908 501732
Rev'd Gussie Walsh		Tel. 01280 821616

**Easter** services were well attended and the church looked beautiful on Easter Day. Our thanks to all who arranged flowers and laundered the Altar linen.

**Messy Church** in the village hall drew a large crowd of children and parents on Good Friday. They had fun making Easter cards and banners, stained glass windows and other activities.

**Family Service** has moved to the 1<sup>st</sup> Sunday of the month. The **Holy Communion service** will now take place on the 2<sup>nd</sup> Sunday.

We have also begun a new contemporary service called "**Sunday special**" on 3<sup>rd</sup> Sunday of the month to replace Matins. It starts at 10.30 am, with tea coffee and croissants being served from 10am The format will be informal with music, songs, slides and film excerpts, talks and discussion groups .Do come and see how you like it because your feedback will be valued.

We still need volunteers to help with **Cleaning** the church on a rota so that everyone's turn comes round less often. If you, on your own or with a friend, can give any time to keep the church looking beautiful, please contact Hazel Dudley on 01908 505727

Volunteers to do flowers on a similar rota basis can contact Beryl Evans on 01908 502567 or Janet Spencer on 01908 502540

**Ride & Stride.** This is a sponsored bike ride, horse ride or walk to a nearby church or churches which will be open for refreshments in aid of Bucks Historic Churches Trust. The Trust has given many grants to Whaddon church over the years from funds raised throughout Buckinghamshire

.This is an opportunity to give something back ,so please support this worthwhile event.  
Sponsorship forms from Sally Green, Bellsbrook, Church Lane. Thank you

**Bell ringing.** You are invited – young or not so young – to attend on Tuesday evenings to learn to ring the bells of St Mary's. You need no particular skill just a desire to be part of the team .Many of our ringers are not youngsters and it would be a great pity if our bells hung silently for lack of ringers. The bells are rung at Festivals and on 2<sup>nd</sup> Sunday of the month.

**Funerals.** Dylan Aragorn Douglas Petch-Stewart                      Rowland Osterberg

The associate priest for this parish is Rev'd Gussie Walsh who can be contacted on 01280 821616 or [am@buckinghambenefice.org.uk](mailto:am@buckinghambenefice.org.uk) We invite you to join us at any or all of our events and services when you can be sure of a warm welcome. We look forward to seeing you very soon.    ♦

*Hazel Hedges*

(Church warden) 01908 501729      [hazel.hedges@gmail.com](mailto:hazel.hedges@gmail.com)

---



**Come and find us in our  
lovely rural village  
setting, with brilliant  
indoor and outdoor space**

We have fantastic, friendly, qualified staff and take children  
from 2.5 years to 5 years.

We offer a forest school session every Tuesday, weather  
permitting.

As we have low ratios we have limited intake so do pop in to  
avoid being disappointed.

Come and see us in action – we have an open door policy –  
come along and play!

**[www.whadodnunderfives.org](http://www.whadodnunderfives.org)**



# HANDS UP FOR JESUS



St Mary's, Whaddon  
After-School Club with  
Rev Gussie and team

Songs, Story Telling, Craft, Games, Food & loads of FUN!

3<sup>rd</sup> Wednesdays per month of term...3.00pm-4.00pm

On January 20<sup>th</sup> we started our **Hands up for Jesus** after-school club in Whaddon School and the adventure continues...

This term we are thinking about the stories Jesus told. Each of the sessions use one of them to help us think about a theme. We do this through craft activities, games, storytelling and lots of singing....all helped along with cake and drink!

## **On 19<sup>th</sup> April**

*The Good Samaritan.*

We thought about how we help others. We made big and little hands, WWJD wristbands, and had a Band Aid relay. Oh yes, we heard a story, had loads of singing and served our friends their refreshments. Each person went home with a wonderful 'Hands up for Jesus' badge and the things they had made.

## **On 18<sup>th</sup> May 18**

*The Eye of the Camel.* This will include camel racing, team games, the story and thinking about 'baggage'. While the usual cake and refreshments will be served and a test to see if Rev Gussie can remember the actions to the songs!

## **On 15<sup>th</sup> June**

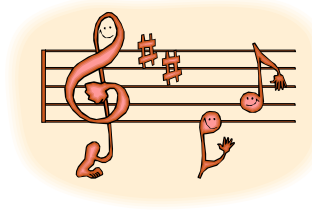
*The Lost Sheep* – If the weather is ok there will be some great outdoor games!

## **On 20<sup>th</sup> July**

*The Precious Pearl.* Who knows?

**Next Hands up for Jesus 18<sup>th</sup> May**

+



## TODDLER CHURCH

Calling all Toddlers, Mums, Dads, Grandparents & helpers too.

We meet at St Mary's Church Whaddon.

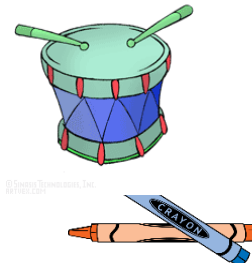
Every Wednesday (term time from 1.45pm - 2.45pm)

The hour consists of arts & crafts, songs & story time plus of course refreshments! A warm welcome awaits you; no one is too old or young. So come along and join in the fun! We look forward to seeing you.

The final Toddler Church before the summer break will be Wednesday 20<sup>th</sup> July when we all hope to go to Thrift Farm for a picnic.

Toddler Church will start again on Wednesday 7<sup>th</sup> September 2016

*Sally Green (01908 526033)*



**LATE NEWS...**The following planning application will be discussed at the forthcoming Whaddon Parish Council meeting at 7.30pm, on Thursday 12<sup>th</sup> May, at the Selbie Memorial Chapel, in Stock Lane. All members of the public are welcome to attend and make their views known. The planning section of this council meeting should take no more than half an hour to discuss.

**16/01298/AOP – Land rear of 2a & 2b High Street, Whaddon – Outline planning permission with access to be considered and all other matters reserved for the erection of one dwelling.**

Following the Appeal Decision of the Planning Inspectorate, which upheld AVDC's decision to refuse the second planning application for two detached 4 bedroomed houses, the land owners have now submitted a third planning application for one large detached five bedroomed house, on the same area of garden land, alongside the Lowndes Arms Pub Garden and fronting onto the track alongside the Village Hall. This latest application is in 'Outline' form only. **For more late planning news, see p. 22.**

# **End of an era for Whaddon**

IT WAS a sad day for Whaddon just before Christmas when Alison Weatherby left Whaddon to live near her daughter in Cheshire. Thus ended a 60-year presence of the Weatherby family in Whaddon, where both Alison and husband Christopher did so much for the village.

Christopher and Alison Weatherby came to Whaddon in 1955 and lived for 10 years at Kings Close House on Nash Road. He had married Alison Pease, a Durham girl, the previous year and after a year together in London, they began looking for somewhere in the country, but within commutable distance to London. It was Alison's aunt Enid Judd from Stewkley who recommended the house in Whaddon to them.

Christopher commuted each day to London to stockbrokers Kitcat & Aitken, but found time not only to participate fully in the Church's activities but also the Whaddon Branch of the Royal British Legion. He was a member of the Parochial Church Council as well as church warden and, after they moved to Whaddon House, their garden became the invariable venue for the Church fete. He and Hughie Willett were for many years the male voice church choir!

Alison meanwhile became a mainstay of the Whaddon Women's Institute and in later years became a parish councillor.

## **Followers of the Whaddon Hunt**

Both were keen riders and followers of the Whaddon Hunt, then based at Wing. In the 1950s, Christopher was a keen and successful point-to-point rider and cricketer while Alison was a mainstay of the Pony Club.

They moved to Whaddon House in 1965, which had come on the market following the untimely death of Richard Marler. They had, by then, three sons and a daughter.

Christopher continued to commute to the City until 1973 when he was asked to become chairman of his family firm, Weatherbys, at Wellingborough. Weatherbys, the horse racing administrators, was modernised and computerised under his wise direction until 20 years later he handed over the reins to his sons, Johnny and Roger. He died in 1984 and is buried in Whaddon Churchyard.

Christopher was born in 1920 in Oxfordshire and, on leaving school, had a brief spell in the City before being called up. He served through the war with the 15<sup>th</sup>/19<sup>th</sup> Hussars, and led a very brave and successful attack on a German position in Holland, for which he was awarded the Military Cross.

On returning to Kitcat & Aitken after the war, he built up a successful Australian business which I took over from him in the 1960s, having also bought his original house in Whaddon, situated on Nash Road. We became the greatest of friends over 55 years.

How lucky Whaddon was to have them for over half a century.



Billy Stanier.

April 2016

# Rowland Osterberg 1930-2016

THE funeral of Rowland Osterberg took place on 22<sup>nd</sup> April at St Mary's Church. He will be missed by many in Whaddon where he had lived, at 16 High St, for 37 years. He moved here to join the Open University as Data Centre Manager.

Rowland grew up in a tenement flat in Glasgow in the 1930s and 40s. Losing his mother, aged five, and having to defend his German-sounding surname during war years on Glasgow's tough streets proved an unassuming start. A local GP encouraged Rowland to enter art competitions. This inspiration settled Rowland to his studies; he finished school with his Scottish Highers and a good result in exams to join the civil service, as well as the local Clydebank Shipyards.

Perhaps luckily for Rowland, National Service intervened before he could decide on a career. Later it was suggested he might apply for a commission and in the mid-1950s graduated with the sword of honour. He started as a flying officer stationed in Rheindahlen, Germany in Accounting and Personnel.



Rowland spent 25 years in the RAF, working in Germany, the USA and the UK. Soon after returning from Germany, Rowland entered the new field of computing or Automatic Data Processing. In the early 60s, Air Commodore Malcolm Jolly had a new project. Rowland's background, training, enthusiasm and belief in the new project, drew his attention. Rowland's new role was in computerising RAF Personnel and Accounting systems from 1950s' paper ledgers.



Rowland mastered the new technology and eventually, he and his team designed new systems to run on the ever-evolving machines of the day. Rowland's experience meant he was selected to go to the USA as part of an exchange posting to work on their Accounting and Personnel systems at Lowry Air Force Base, Denver, Colorado.

With his US experience, Rowland returned to Britain working with a team in Gloucester to centralise Accounting and Personnel Computer systems at RAF Innsworth using a British ICL machine. Later examples of these orange machines are in the National Museum of Computing at Bletchley Park

Rowland and his wife, June, were active members of the Parish council and St Mary's Church. They helped to maintain the church and ran a youth club in the village hall. As treasurer of the Parish Council Rowland undertook a great deal of research to uncover a gift to the village school and which had been on the books since the 17<sup>th</sup> Century.

Rowland will be tenderly missed in the village. He leaves three sons and two grandchildren. The family wish to thank everyone for their kind wishes and the support that they have received from all at this time. ♦

*Alan Osterberg*

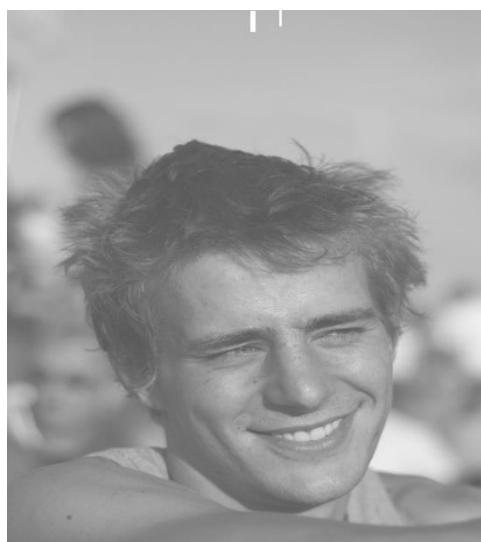
# Dylan Petch-Stewart 1981-2016

**W**HEN a family member takes his or her own life, especially a young man with the possibility of many years of life in front of him, the initial shock and grief are followed by unanswered questions, feelings of guilt and 'if only' scenarios. None of which can be answered satisfactorily.

It becomes history, with only memories, or in my case, a son brought into this world by a loved mother and partner who pre-deceased Dylan by almost 27 years, when he was just eight years old.

I was shocked to learn that Dylan was one of many young men who take similar actions to him every single day of the year. The question has to be asked, not only in Dylan's case, why?

I'm sure there are different contributing factors in every sad young man's suicide, but the question remains: why can't we stop these life-ending actions? It's a staggering statistic, but the



main cause of death of young people under the age of 35 is suicide. And the World Health Organisation (WHO) has predicted that 2015 would see suicide linked to more deaths in Europe than HIV/Aids, heart disease and road injuries. On the website of POPYRUS, I discovered a national charity dedicated to the prevention of young suicides. Please take a look when you have a moment!

I'm advised that sometimes a stigma can be attached to those losing someone to suicide, I trust this will not be the case with me and my family in losing Dylan. I will try and explain in my own words why this should not be on anyone's agenda.

Our loss is enough. And as we and so many adults, especially Dylan's young friends and acquaintances demonstrated at Dylan's memorial service in the church and afterwards at the Lowndes Arms, he was a character of whom none of us need feel ashamed. Tears and laughter in equal measures were bestowed on his colourful past life.

This year was supposed to be a celebration of 40 years since Maggie and I came to the Glebe, Nash Road. We arrived in what was to be our home for a year, an ex-Barton Transport double-decker 'bus, Reg no. VVO 735, which subsequently became our three children's den and party-place. I'm pleased to report it didn't find its way to the scrap yard and, in its restored state, can be found on Google.

Dylan followed Ella and Libby into this world some five years after our arrival. Dylan's life was not without its problems. At 11 months old, he contracted the life-threatening meningitis and was in intensive care; held close to his mother's bosom for two weeks they were in hospital together.

A few years' later, mumps caused almost total deafness in one ear. Then at the so young age of eight he lost his mum to a debilitating adrenal cancer. His early school days, as were those of his sisters, were spent at the village school. Mine and his mum's decision, before she died, was to continue the three children's education in the private sector which, due to my circumstances, brought the necessity of the children boarding for a few years, until the money ran out.

Dylan boarded at Swanbourne House School. He then attended Akeley Wood School on a daily basis. From there he went on to spend a year at the Construction Industry Training College in Norfolk. His working life began and continued on and off as a carpenter with D.G.S. Construction, a not an all-together satisfactory arrangement with the usual family business problems. He

remained self-employed until his passing, drifting and working with various individuals and companies.

He was a party animal, never happier than when he was dancing at Glastonbury or on a snowboard. A village playboy, always good for bringing a smile to everyone's face, except perhaps his father's! He had a big ego; always on the lookout for next trend or wizzo-gadget. On reflection, perhaps egos can become the internal enemy; never allowing a troubled self to come to the surface, or admitting problems and allowing a troubled soul to talk things over with those who may have been able to assist with mental torments.

He would have reached his 35th birthday on the day of his funeral, joining his mother with the similar theme "Forever young".

I wrote this poem to read at the crematorium.

This morning a lone white swan crossed my path,  
Flying to a destination, through a cloudy grey sky.  
I imagined it was you, making a final defiant fly-past,  
To a party who knows where?  
The ultimate,  
The big one,  
The one from which you can never return.  
No more bills,  
You won't need pills,  
No worries,  
No nagging dad,  
Perhaps it won't be at all bad!  
Temptation is a thing of the past,  
You can have yourself a drum and base blast.  
So, my son, we will give you a good send-off,  
And forget how you've messed us about.  
Reminisce how you made all of us laugh,  
Because you could never let the opportunity pass.  
I'm encouraged to believe this cannot be the end,  
So I'll try and hold back the tears and disregard my fears;  
And be the first to admit that I'm no poet.  
I'll let others bring this awful occasion to a conclusion.

I would like to take this opportunity to thank the church community, church wardens and the Rev. Gussie for allowing and making his memorial service such a success along with Melanie Short for making the funeral arrangements go so smoothly. ♦

*Doug Stewart*

---

## **LATE PLANNING NEWS – See also page 18.**

**The following planning application will be discussed at the forthcoming Whaddon Parish Council meeting at 7.30pm, on Thursday 12<sup>th</sup> May, at the Selbie Memorial Chapel, in Stock Lane. All members of the public are welcome to attend and make their views known, which will help shape the WPC formal response to the planning department at AVDC by 16<sup>th</sup> May.**

### **16/01513/APP 33a Stock Lane, Whaddon - Removal of conservatory & erection of two storey side and single storey rear extensions – Amendment to planning approval 15/02883/APP**

As the planning description states, the 'extensions' were approved on the previous application on 22 October 2015. The current application seeks to amend the details of the design previously approved, with the main changes being a) render the entire existing brick building and painting it white, and b) changes to window design and positioning. The property does not stand within, nor adjoins the Stock Lane Conservation Area.

# Glastonbury returns to Whaddon

Clare and Mike Hadida donate a *Glastonbury Thorn* to Whaddon, by Kieren Beasley

In about 2007, one corner of a horizontal flagstone inscribed "The *Glastonbury Thorn*" was just visible in the churchyard. However, turf covered the remainder of the stone. I uncovered the flagstone, but, after a year, grass had covered it again. As to the original *Thorn*, it died and was chopped down in 1980.

In 2014, Jessica Hain excavated part of the churchyard, but could not find the flagstone. In October 2015 "Year 5 archaeologists" [Jessica Hain and Tilly Garland] excavated again and eventually uncovered the flagstone. Hearing this, Clare and Mike Hadida generously offered to donate a replacement *Glastonbury Thorn*, which Roger Adams planted in December. The *Thorn* is propagated by grafting.

On Sunday 7<sup>th</sup> February 2016, after the 10:30 Village Worship [children's] service, the Rev. Gussie Walsh dedicated the new *Glastonbury Thorn*, situated near the Cyril Hayward bench just inside the Church Lane entrance to the churchyard.



**Pictured left:** Clare Hadida, Tilly Garland, Mike Hadida, Kieren Beasley. **Pictured right:** Foreground: Kieren Beasley and Rev Gussie Walsh.

A laminated plaque attached to the wire protection for the new *Thorn* reads:-

This *Glastonbury Thorn* [*Crataegus monogyna* 'Biflora'], donated by Mike and Clare Hadida, was planted in December 2015, when it was 4 ft tall. ['Biflora' signifies that a plant flowers *twice* per year.]

Grass covered the inscribed stone which marked the location of our previous *Thorn* [circa 1905 – 1980].

Evelyn Jaworska can recall seeing the previous *Thorn* in flower on Christmas Eve, as well as during the early summer.

Parents are invited to photograph their child next to the *Thorn*, and to repeat this in 2026. Who will be taller then, the child or the *Thorn*? ◇

[kieren.beasley@gmail.com](mailto:kieren.beasley@gmail.com)



## Whaddon Chapel

### Summer 2016

Angels. They seem to have undergone a great resurgence in popularity over recent years! You see them on everything from books to badges and ornaments. In our Bible Study group recently, we've come across something of what the Bible has to say about angels.

It is true to say that they are servants - God's servants. As such they do whatever He wills. Their jobs have included serving and helping God's people, bringing about God's judgements (angels can be pretty terrifying) and bringing God's messages to man. But however awesome angels are, we have been reminded that there is one person infinitely greater - their Creator, Jesus Christ. Angels exist to turn our minds to God.

The writer of the letter to the Hebrews writes:

*"...we must pay much closer attention to what we have heard [from God], lest we drift away from it. For since the message declared to angels proved to be reliable, and every transgression or disobedience received a just retribution, how shall we escape if we neglect such a great salvation?" (Hebrews 1v2-3)*

Further on, in the same letter, he explains this 'great salvation', i.e. what it was that Jesus came to save us from:

*'Jesus too shared in their humanity so that by his death he might destroy the power of him who holds the power of death—that is, the devil— and free those who all their lives were held in slavery by their fear of death.'*  
(Hebrews 2v14)

So when you next come across an angel, remember they're simply the messengers. The message is freedom from death through Jesus.

Why not join us to find out more? You'll be very welcome.

#### Regular meetings

- Every Sunday at 4pm-5pm, Whaddon Chapel.
- Bible Study and Prayer 7:30pm on the 1st and 3rd Thursdays of the month (at 3 Briary View).





## WHADDON WOMEN'S INSTITUTE

So far this year we have had a wide range of subjects for our members, including a talk by Chris Wood from the Parks Trust on the subject of wildlife that can be seen in and around Milton Keynes. He proved there is more to Milton Keynes than concrete cows and roundabouts. Then we had 'flower arranging for the terrified' by Dru Ellis, who gave us some interesting ideas on simple but effective arrangements for the non-flower arrangers among us.

This brought us to our meeting in April when we had Mr. Gordon Abbott telling us about his experiences as an evacuee during World War Two.

We are now planning for May, which includes our float for the May Day Parade. Our thanks are due to Stuart Grace for the loan of his trailer and driving for us.

### **Eightieth birthday**

We also have our eightieth birthday social evening on 11<sup>th</sup> May, when we will be celebrating also the reforming of the Tally Ho Group, which was disbanded a few years ago on the retirement of the Group Convenor. Margaret Barrie has now taken up this task.

The Tally Ho Group comprises five local institutes and members from these will be invited to our social evening. Institutes are divided into groups and they hold a Group Meeting once or twice a year when the institutes take it in turn to host the meeting. The convenor co-ordinates these meetings with the host institute. The first Tally Ho meeting will be held in the Autumn.

Returning to our Birthday, I wonder if the ladies who started the Whaddon W I, and those present at that first meeting in May 1936, visualized it would still be going strongly eighty years later. We still meet on the first Wednesday of each month and at the same time, 2pm, when all are welcome in the Jubilee Hall. ♦

For further information please telephone 01908 301987.

*Susan White*

President

May 2016

# Whaddon Night Owlers WI

We continue to keep busy with a programme of events to entertain and inform. Last month we tried our hands at watercolour painting and tapped into our inner Monet – a revelation! People who hadn't done any art work since school could produce beautiful pictures in an evening. Using just one colour too! For a sample of the images we produced check our website – [www.wnowi.wordpress.com](http://www.wnowi.wordpress.com) I am sure members will take commissions!



In April we heard from a speaker about the work of the Mercy Ships. This "provides the world's largest charitable floating hospital...(and) brings free medical care to some of the world's poorest people...(We) are almost entirely staffed by volunteers." The charity was started in 1978 and has helped more than 2.4 million people. The ship has 82 patient beds and five operating theatres and all manner of state-of-the-art equipment. It was a fascinating insight into the work of a lesser-known but clearly important charity.

In May we have a humorous speaker to talk about the changing world of Open University broadcasting, "Kipper Tie to Cutting Edge." Members who have heard the speaker before speak very highly of him.

Then on to a highlight of the year in June. It is our open meeting to which you are all invited – Cat Weatherill is performing for us. She is well known in the village and tickets for the evening will sell out fast.

Get your tickets by emailing Daphne on [daphneroberta@gmail.com](mailto:daphneroberta@gmail.com). At just £3 for WI members and £6 for non-members it will be a fabulous evening. Cat is described on her website as "a compelling storyteller. Strong and sexy, playful and passionate, her performances excite on the night and linger long in the memory."



If you are interested in joining us, we meet in the Jubilee Hall on the third Wednesday of the month at 7.30pm and welcome ladies of all ages. Contact Daphne (01908 502088) if you would like to know more – and come along to a meeting to see what we get up to.

*Alison Cross*



# SEA CADETS – TS WHADDON

This is your chance do all this....or any of it:  
If you between 10 and 18 years old, then why not join us in 2016?



**Left and below:**  
Kayaking or Rowing at Emberton Park,  
Olney

**Bottom left:** Colours Parade, Kiln  
Farm - 7pm Tuesdays

**Bottom:** TS Royalist in The  
Solent



for information: telephone David Spencer 01908 502540 or contact Jamie Spink, 11, Ladymead

# Evelyn Remembers...

**Evelyn Jaworska has lived in Whaddon all her life. In this series, she talks to Margaret Barrie and John Mortimer, looking back on village life before, during and after the war.**

EVELYN was born in 1931 at No. 18 Vicarage Road, next door to where Florrie lived (No.16). At the time, No. 18 formed one of a cluster of three cottages; later, two were made into one. In those days, houses did not carry numbers, and previously Vicarage Road was known as Pinks End.

Evelyn, and her parents, Fred and Ada Dormer later moved to No. 4, next door to the shop at No. 2. The shop, prior to its arrival, had been *The Robin Hood* public house – one of three then in the village, the others being *The Haunch of Venison* and the *Fox & Hounds*,

In addition to the shop, Vicarage Road was also the proud possessor of one of three village pumps – the other two being in the middle of Stock Lane and in the High Street. It was only in 1941 that houses enjoyed the pleasure of mains water – one of the benefits of the Second World War! Five years earlier, in 1936, electricity had been brought to the village.

The arrival of Evelyn's brother Ron, caused the Dormer family something of an upheaval. They would require an extra bedroom with the result that Evelyn's mum Ada managed to obtain a house at the top of Vicarage Road (No. 32), where Evelyn lived until she married at 21.

## **11-plus creates a dilemma for Evelyn**

Evelyn attended Whaddon School until 11 after which she and other children were required to attend school in Stony Stratford.

"I left school because you had to go to Stony at 11 unless you passed the 11-plus," Evelyn said. "I wouldn't sit that because I didn't want to go to the grammar school in Moon Street, Wolverton. In those days their holidays didn't correspond with ours. So my friend Beryl and boys who had passed had to bike to school because as holidays were later than ours."

Many years later, the memory of that 11-plus decision was rekindled when Evelyn met her infant school teacher.

"She greeted me with the words: 'Oh, Evelyn, you were a naughty girl. You wouldn't sit for the 11-plus would you?'"

Replied Evelyn: "No. I didn't want to go to school for years and years!"

Evelyn was eight and at Whaddon school when the Second World War broke out.

"We thought it was very exciting, all those soldiers with tanks, and guns and goodness knows what," said Evelyn.

"We thought it was wonderful."

But, as we shall see later, Evelyn also experienced the dark side of war.

Evelyn has fond memories of life in the village before the Second World War.

"We knew everybody and where everybody lived. And, everybody knew everybody else," she declared.

Evelyn can recall easily the village shop



Evelyn Dormer alongside mum Ada with the petrol pump in the background, left.

in Vicarage Road and its owner, Mr. Clarence Jinks and wife Ester who moved in, probably in 1933 or 1934. Mr. Cowley had owned the shop previously; he later moved to Bletchley.

"The Jinks never had any children," said Evelyn. "They would have loved them."

Mrs. Jinks sold the shop at the end of 1962 or the beginning of 1963. Following the departure of the Jinks, Mr. & Mrs. Bath took over the running of the shop.

"The shop sold all kind of things. So, as well as groceries, you could buy paraffin for lamps, cooking and heating, as well as butter, margarine and cheese. The shop also had a machine to slice bacon," explained Evelyn.

The shop had one notable, distinguishing feature – a petrol pump. From this Mr. Jinks would dispense fuel to passing motor cars, of which there were few during Evelyn's early childhood. Mr. Jinks also operated a taxi service. Among the few people who then owned a car was the vicar.

"Although I said I wouldn't work in a shop, I did work for a few hours in the mornings to help out," said Evelyn.

There were other 'shops' in the village, including the post office – which also sold groceries – and the bakery, run by a Mr. Haynes. However, the bakery closed down during the war. In its place, Bambos of Stony Stratford had a van which delivered bread to various villages, including Whaddon. The van also sold chocolate.

"My aunt used to buy my brother and me a bar of Nestles chocolate each," she told us. "My mother could not afford to buy them for us."

### **Produce brought to the village**

Other shops nearby serving the village included the local Co-op, which sold groceries and bread. A butcher's van brought meat to the village, and then there was Odell's, which specialised in ironmongery items.

Mr. Wickens, a tailor in Stony Stratford, ran a general household store which sold, among other items, hats, clothing, shoes, haberdashery and linen. He also had a furniture store.

Mr. Wickens would make monthly visits to the village when he would take orders for clothes. These would be paid for monthly. Mr. Wickens also took orders for furniture. Stony Stratford served as the local shopping point although it was possible to catch a bus to Northampton.

Evelyn recalls how the mother-in-law of next door neighbour Florrie was a dressmaker.

"I used to model clothes for her," said Evelyn.

Local buses served the village on a regular basis. There were two buses a day to Stony Stratford, but only one bus a week to Bletchley. Today there are no buses. The buses to Stony left at 11am and returned at 4pm.

From Stony it was possible to catch a bus to Wolverton.

Every morning, however, there was a workers' bus which left the village at 7am and returned in the evening at 6pm. Evelyn caught the workers bus to Bletchley where she worked as a machinist making coats.

The Lowndes Arms used to be called *The Haunch of Venison* and during the war,



Mr. Cowley standing proudly outside the shop, No. 2 Vicarage Road,

the publican, Mr. Turner, often ran out of beer, whereupon he would put up a notice in the window: "Sorry. Out of beer".

"The men would play skittles in the pub. But it took the war to change attitudes towards women. Before the war, it was frowned upon for a woman to enter a public house. But the war changed all that," said Evelyn.

Perhaps not surprisingly, while at school in Whaddon, Evelyn and her schoolmates would take part in knitting various items for the soldiers, including scarves, mitts and balaclava helmets. But the move to school in Stony Stratford brought many changes.

"At Stony Stratford, for example, we learnt about housekeeping and cookery," explained Evelyn. "We had to leave when we reached 14 to start work. That's when I went to work in the clothing factory in Bletchley."

It was while at school that Evelyn experienced some of the stark reality of war.

"We were going on the school bus one morning through Nash and the Chantry. There were two cottages up on the hill that had suffered a direct hit in the night," said Evelyn. "The houses were out in the fields, in the middle of nowhere. The occupants were killed. Next morning there was nothing but a big lake and no houses." ◇

**Next time: How 'the war' changed Evelyn's life.**

---



## WHADDON BOOK CLUB

### Shakespeare's 'missing years'

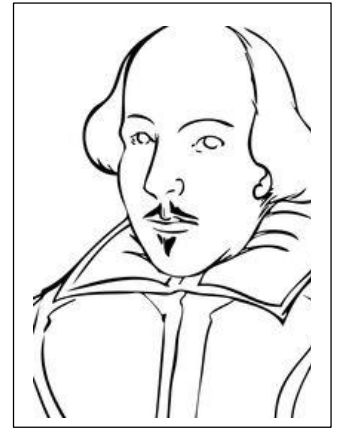
ON 16th April, a few members from Whaddon's book club met at Waterstones Midsummer Place in intu, Milton Keynes. This store, known as WaterstonesMK on Facebook and more colloquially as "the big one in the new bit", had an extensive refurbishment just before Christmas and in the last few months has increased the number of events it holds

These have included a fun-filled Harry Potter night for 300 costumed fans in February, and book signings by authors such as David Litchfield (*The Bear and the Piano*) and Robin Stevens (the *Murder Most Unladylike* series). Other regular events include a Dots to Tots Picture-Book Club every Tuesday from 1.30 pm, and a teen book club which meets every other Wednesday from 6-7pm. The latter was recently attended by Teri Terry, author of the "Slated" trilogy, who talked about writing her new novel *Book of Lies* and discussed how authors go through the whole process of writing books and getting novels published.

On this particular occasion, we were at Waterstones at the start of their Shakespeare Celebration week in the lead up to the 400th anniversary of Shakespeare's death on 23<sup>rd</sup> April. We were attending a Shakespeare quiz.

Waterstones senior bookseller (and Whaddon resident!) Nikki introduced everyone to our quizmaster for the afternoon, Benet Brandreth - son of broadcaster/writer Gyles. Benet, who has performed in sold-out one-man shows at The Edinburgh Festival, happens to be an award-winning barrister who specialises in intellectual property rights. He is also rhetoric coach and Shakespeare lecturer to the Royal Shakespeare Company (RSC), a qualified choreographer, a Filipino martial arts instructor and published author. He describes himself as exhausted from his efforts to be a New Renaissance Man!

Benet proved to be an excellent and very amusing raconteur, with a ready wit and inexhaustible *joie de vivre*. He led us gently through 30 questions about Shakespeare that were illuminating, enjoyable, educational and all couched in Benet's trademark wry, self-deprecating style.



Here are a few questions that illustrate some of the fascinating facts we discovered!

- a) How many of the 36 plays printed in the First Folio have some or all of the action set in Italy?
- b) Did you know the name by which the daughter of Baptiste Bassano, a Venetian born musician at Queen Elizabeth's court is known to history? Some say she is the inspiration for William Shakespeare's dark lady of the sonnets.
- c) The character of Sir John Falstaff originally had a different name but William Shakespeare was obliged to change it after complaint from the family of the man whose name it was – what was Falstaff's original name?
- d) Miranda, Caliban, Sycorax, Prospero, Setebos, Stephano, Trinculo, Francisco, Ferdinand are names of characters in *The Tempest* – they are also names of the moons around which planet?

### **The missing years – what happened?**

Benet also spoke about his new book, *The Spy of Venice*. This novel is a swashbuckling, historical thriller and explains what the witty, adventurous young William Shakespeare might have got up to in the so-called "missing years" between leaving Stratford and first being recorded as living in London! Nikki introduced us to Benet afterwards, and we enjoyed a very lively conversation. We also had our copies of *The Spy of Venice* signed with personal dedications from the author. Guess what the Whaddon Book Club will be reading soon!

If you'd like to join our book club, please contact Jane Porter, Janet Watson or Margaret Barrie for details.

Answers to the questions:

- a) 13 – about one-third (*All's Well that Ends Well, Antony and Cleopatra, Coriolanus, Cymbeline, Julius Caesar, The Merchant of Venice, Much Ado About Nothing, Othello, Romeo and Juliet, The Taming of the Shrew, Titus Andronicus, The Two Gentlemen of Verona, and The Winter's Tale*).
- b) Emilia Lanier
- c) Sir John Oldcastle
- d) Uranus – all of the moons are named after characters from either Shakespeare or Alexander Pope.



*Nikki Bloomer*

# Whaddon First School May Fayre 2016

As the chairperson of the Friends of Whaddon school I would like to take this opportunity to say a huge thank-you to all the people who helped at our May Fayre. Thanks in particular to the WI and everyone who helped on the floats.



The Winslow Concert Band were fantastic; I have had so many positive comments.

The Teachers: Mrs Davies, Headteacher; Mrs Ash, Year 2 and Miss Nash, Year 1. We have a fabulous team at the school who work very hard to give our small school the best opportunities. Mrs Gyau-Awuah and Miss Swain, the two teaching assistants, managed to escape the camera! Also a thank-you to Hazel Hedges and the other governors.





The following list of thanks is by no means exhaustive....

The Burger Kings: Chris Hickman, Pete Bush and Sid Vincent, to our judges Paul and Karen Logan, Paul and Linda Warren, Chris and Helen Hickman, to Angie Joint who designed our posters and flyers, and to Clare Hadida for the loan of her car for the May King and Queen. We also had so many people who helped set up and then packed away in the torrential rain and helped run stalls. So a special thank-you to Alice Hain, David Macintyre, Fredrick Hayward, Pauline Winwood, Charlotte, Chris and Marcus, and of course our always-successful Jambola stall run by the Haigs. Paul from Sportfever was great and enjoyed by the children. Then there were the yummy sweets from the Night Owls WI. And Bob Adams, our wonderful sound man, who stayed the whole day to help out.



To the Garland family, Rachael and Jo Fensome. Also a huge thank-you to all the parents of the school who volunteered this year. Finally, a massive thank-you to the Friends of Whaddon Committee and partners who worked hard to make the day possible: thank-you to the Merediths, Dietschs, Christies, Mitchells, Ambler-Boatengs, Williamsons, Guy Birch-Jones, Chandlers, Carters, and my own family, the Thomsons, who I think feel a little neglected over the past week. And a special thank you to Rachel Lockett for her hard work which went into the field plan. It was wonderful to have the Maypole dancing on the field where everyone could enjoy it. Weeks of work happen in advance of the day and simply would not be possible without this unique team and their families' support. ◆





# NEIGHBOURHOOD WATCH - WHADDON

**What a sad world we live in! Below are three recent warnings sent via Thames Alert on behalf of ActionFraud and of which you should be aware.**

## FAKE EMAIL ADDRESSES

THIS ALERT is a reminder to be aware of emails that appear to have been sent from a legitimate organisation. Fraudsters often use fake email addresses designed to encourage recipients to open attachments or links. You are advised that if you are in any doubt as to the origin of an email, do not open it. Consider that emails can be spoofed and used to generate spam to recipients far and wide. If you receive a spam email, you MUST NOT open it. Instead, delete it from your email system to avoid infecting your device. If you have opened an attachment from a spam email, you should get your device checked over by a professional and change the passwords for all your bank, email and online shopping accounts.

### Protect yourself:

- Do not click or open unfamiliar links in emails or on websites.
- Make sure you install and use up-to-date anti-virus software.
- Have a pop-up blocker running in the background of your web browser.
- If you have opened an attachment and 'enabled macros' it is very likely that all your personal data will have been breached. You MUST change all your passwords for personal accounts, including your bank accounts.
- Ensure Adobe, Flash and any similar software is up to date on your computer.
- If you think you have been a victim of this type of email you should report the email to Action Fraud, the UK's national fraud and cybercrime reporting centre:  
[www.actionfraud.police.uk](http://www.actionfraud.police.uk) If you do make a report please provide as much detail as you can about the email and any effects it has had on your computer. Additionally if your Anti-Virus software detects any issues in relation to this email please provide us with the details.

## HMRC REBATE SCAM

Fraudsters are texting members of the public offering a tax rebate. The text message contains a link to a website and requests to provide personal information, such as bank account information, to claim the non-existent rebate.

### Protect Yourself:

- Don't click on web links contained in unsolicited texts or emails.
- Never provide your personal information to a third party from an unsolicited communication.
- Obtain the genuine number of the organisation being represented and verify the legitimacy of the communication.
- HMRC will never use texts or emails or tell you about a potential rebate or ask for personal information.
- If you have provided personal information and you are concerned that your identity may be compromised consider Cifas Protection Registration.

## ONLINE JOB RECRUITMENT

The National Fraud Intelligence Bureau (NFIB) and Action Fraud have noticed a rise in the reporting of victims being recruited via Facebook to sell items for suspects on eBay – often stating that it is a quick way of making money.

The items are said to be bankrupt stock, purchased via auctions, and need to be sold on quickly. The majority of the items reported have been Apple MacBook Pro/Electrical Items.

The victim places the items on eBay and once the items are sold, the victim will get paid and transfer the funds to the suspect/recruiter.

Once the suspect/recruiter gets the funds, the purchasers are claiming that they have received empty cereal boxes or often no goods at all, leaving the victim being reported as the actual suspect, and leaving them out of pocket as their account will be debited.

### Protect yourself:

- Consider conducting research on other information provided by the seller, for example: a mobile phone number or email address could alert you to negative information associated with the number/email address online.
- Be very cautious of unsolicited emails or approaches over social media promising opportunities to make easy money.
- When accepting offers, verify the company/entity details provided to you and check whether they have been registered in the UK.
- If you think the deal or offer is too good to be true then it probably is!

If you, or anyone you know, have been affected by this fraud or any other scam, report it to Action Fraud by calling 0300 123 2040 or visiting [www.actionfraud.police.uk](http://www.actionfraud.police.uk).

Finally, the Neighbourhood Watch team would like to pay tribute to Rowland Osterberg, who sadly passed away recently. During his time in Whaddon, Rowland made an important and much-valued contribution to the work of the team and will be missed by all. ♦

### YOUR LOCAL CO-ORDINATORS

Graham Stuart	2, High Street. Tel. 01908 501973
Peter Beckwith	6, Old Manor Close. Tel: 01908 503194
Sally Green	Bellsbrook, Church Lane. Tel: Ex-directory
David McIntyre	2a, Vicarage Road. Tel: 01908 867836
Howard Jones	8, Ladymead. Tel: 01908 501871
Sally Telford	4a, Stock Lane. Tel:01908 336960
Pauline Winward	1, Whaddon Hall. Tel: 01908 502559

+



**Winslow Community Bus**  
 wdcbenquiries@btconnect.com  
 www.winslowbus.com  
**01296 715786**



**Everyone is eligible to come on the bus. We pick up near to your house.**  
**Please ring Sue for more information. \*Denotes bus pass accepted.**

Tuesday 3 <sup>rd</sup> May	Buckingham bus*
Tuesday 10 <sup>th</sup> May	Woodland Run with pub lunch. £6 travel.
Thursday 12 <sup>th</sup> May	Westcroft Bus*. Aldi, Morrison's, Boots etc.'
Tuesday 17 <sup>th</sup> May	Visit to St Albans Verulamium Museum and park. £6 travel.
Monday 23 <sup>rd</sup> May	Asda shopping in Bletchley. 2 hours there. £4.
Thursday 26 <sup>th</sup> May	Westcroft bus*
Sunday 29 <sup>th</sup> May	Duxford Air Show– The American Experience. The American Experience tells the story of American and British collaboration over 100 years. It also shows the impact of the American forces on Duxford and the eastern region in the First and Second World Wars. Dynamic flying displays combine with evocative living history re-enactments, sounds of the eras and the voices of those men and women who lived and worked at Duxford. The story then continues through the Cold War to the present day. £25 includes entrance.
Thursday 2 <sup>nd</sup> June	Lunch at The Navigation, Stoke Bruerne, with time for 30 min boat trip, bookable on the day. £5 travel.
Tuesday 7 <sup>th</sup> June	Buckingham bus* 1 hour in town. 1 hour in Tesco. Door-to-door.
Thursday 9 <sup>th</sup> June	Westcroft bus*.
Monday 13 <sup>th</sup> June	Asda in Bletchley. Shopping. M&S, H&M. £4.
Tuesday 14 <sup>th</sup> June	Visit Market Harborough – Historic Market Harborough is known for its beauty, wealth of good-quality, independent shops, indoor market and more than its fair share of nice places to eat and drink.£6 travel.
Sunday 19 <sup>th</sup> June	Seaside trip to Swanage. £20.
Thurs 23 <sup>rd</sup> June	Westcroft bus*.
Tuesday 28 <sup>th</sup> June	Local lunch at The Bell, Woburn. Great value meals. £5 travel.
Thurs 30 <sup>th</sup> June	Westminster to Greenwich boat trip with time to explore Greenwich. £25.

**Milton Keynes Theatre. Please book as soon as possible to avoid disappointment**  
*All prices are for tickets in Band A price range (Circle or Stalls) and travel.*  
*Performances start 2.30pm, unless otherwise stated. Door-to-door service.*

Wednesday 25 <sup>th</sup> May	<i>Save the Last dance – Re-live the music and magic of '63. £22.50.</i>
Wednesday 1 <sup>st</sup> June	<i>Annie – Leslie Joseph returns as the tyrannical Miss Hannigan! £25</i>
Wednesday 15 <sup>th</sup> June	<i>Guys and Dolls – The greatest musical of them all! £30.</i>
Wednesday 22 <sup>nd</sup> June	<i>Rehearsal for Murder – A devious cat and mouse chase. £25.50.</i>
Wednesday 29 <sup>th</sup> June	<i>Joseph &amp; Amazing.....Coat. A sparkling family musical. £22.50</i>
Wednesday 28 <sup>th</sup> Sept	<i>Sister Act – A 'divine' musical comedy. £23.</i>
Wednesday 2 <sup>nd</sup> Nov'ber	<i>The Commitments – The musical we've all been waiting for. Over 20 soul classics. £30</i>

# Pub quizzes raise over £2,000

Over the past two-to-three years, the Sunday pub quiz has raised just over £2,000 which has been donated to Willen Hospice.

The quiz nights were possible due to the generosity of the Lowndes Arm management. They were attended by local regulars, with a special mention for Semantic Sid, who gift-aided most of the winnings to Willen.

Sadly, with the pub closing, the quiz nights have come to an end – temporarily. Maybe it will be possible to restart them at another venue. Meanwhile, I would like to thank all those who have taken part, enjoyed the fun and contributed so generously.

Finally, Willen Hospice will be re-introducing collecting boxes later in the year, to help with their fund-raising. ♦

Regards to all,

*Barry*

## ELMER'S SCHOOL CHARITY

Way back in 1653 William Elmer, a resident of this area died, and by his will he founded a Charity for 'Educational Purposes' in favour of the Ancient Parishes of Beachampton, Maids Moreton, Whaddon, Calverton and Nash.

This Charity still exists today with the original fund worth in the order of £25,000. After the proper costs and expenses of running the Charity, the income from the investment (the investment itself cannot be touched), is used to promote the education of those between 18 and 25 years. The fund provides financial assistance for clothing, tools, instruments or books to assist such persons to pursue their education (including music and other arts), to undertake travel in furtherance thereof, or to prepare for or enter a profession, trade, occupation or service on leaving school, university or other educational establishment.

The grants, if applicable, agreed and awarded, are not huge, and depend on the amount of investment 'interest' earned and the number of eligible persons applying, but can range from £25 - £100. Recent recipients have used such sums towards books and stationary (but not any actual educational fees)

For further information and an application form, please contact either of the two Whaddon trustees, Derek White or Graham Stewart.

# POEM

## The swifts

Such sweet little creatures, small and slim,  
With tiny eyes and soft black wings.  
They fly for miles the open skies,  
Spanning oceans and nations wide.  
Chasing the Jetstream, they stay together;  
Looking out for one another.  
Taking in tasty morsels and drops of rain,  
As they sour over mountains and lowland plains.  
All swooping, diving and death-defying,  
These creatures of habit live close to the wire.  
They're nature's diversity for us to admire,  
All mystic and oh so fragile to the touch.  
Our fleeting images come in a rush  
As we watch and wait for them to return to us.

Eileen Kay Gingell

## Time on your hands?

Like to meet new people and do something worthwhile?

Enjoy going to new places?

Then why not be a volunteer driver for the Winslow Community Bus?

We provide full training, and you can do as much or as little as suits you.

For further information please call Sue on: 01296 715786

Or e-mail [sue@winslowbus.com](mailto:sue@winslowbus.com)

3	9		4					
							1	5
2		8		6	7			
				1		2		
							3	
		4	2	5		8		
2			5	3				
4			7		9			
	1							

## Puzzle Time

### SUDOKU

Medium

8			3		2			
	7					5		
9			2	6				
			3			6		
2					8			
	6					4		7
	5							9
	9							
		7				3	1	6



## *Creative Coach: Thoughts from my comfy chair*

Consider your dash. If you haven't yet read Linda Ellis' poem, *The Dash*, I recommend it – just Google it! In it, she describes a eulogy read at a funeral, where attention is drawn to the dash that's in between the year of birth and the year of death, and she suggests that everyone might want to think about how they would like to spend that period of time.

The dash can represent many ideas: seize the day; consider what's really important to you; do what you want to do; make a difference; feel the fear and do it anyway; do something that surprises you....the list is endless really.

One thing is clear: we don't know when the time on the right hand side of our dash will be up, so it's very much worth considering lifestyle, ambitions, goals and plans sooner rather than later. This is not gloom and doom, but rather future-focused thinking, and very much in the spirit of *The Dash*, which encourages us to consider how we would like to be living our lives, and how we would like to be remembered.

A small word of warning about the message though: I'd suggest that if we live our lives only so that others will think well of us, we may not be being entirely true to ourselves. It's always good to receive positive feedback from others, but some choices and decisions are ours, and ours alone. We can certainly learn lessons from the past, and use these to help us in the future, but dwelling on what has come and gone can hold us back, make us fearful and cloud our thinking.

So, how would you like to live your dash? I think it comes down to 3 key elements:

### **Look after yourself and those around you**

You're the one living your life, so take responsibility for ensuring that you're able to do so with enthusiasm, positivity and a twinkle in your eye! Pay attention to your health: both physical and mental. If you're in a good place, physically and mentally, you'll be better able to support and

enjoy being with the ones with whom you're close. Make a difference to them.

## **Do something that fulfils you**

For many of us this means work: the day job. Whether this is paid work, or voluntary work, it doesn't matter. If what you do for the majority of your day does not fulfil you, change it and do something different, or extra. Sometimes a job is a means to an end, and provides you with the resources to do something outside of the day job which fulfils.

Sometimes, it's just as important that the job itself is fulfilling. Only you know what you need.

## **Connect and communicate positively with others**

Whatever you do, keep lines of communication open, and connect with people, as often as you can. Meeting and talking to others, both in person and through social media opens our minds to different outlooks, different possibilities, different cultures; it's an enriching experience. Communication is so important; we're all social beings, and thrive when making connections with others.

What would be the most enjoyable, useful, fulfilling way for **you** to spend your dash? Ready for a change? Go for it, and don't forget to let me know what you'll be changing, or get in touch if you'd like some help....

*Marianna*

[www.chocolateboxcoaching.co.uk](http://www.chocolateboxcoaching.co.uk)



*Lifting the lid on your  
imagination, inspiration and  
motivation*

- Happy? Great! Comfortable? Great! That makes it perfect timing to explore how to move on and tackle your next challenge.
- Unhappy? Uncomfortable? That makes it perfect timing to explore how to move on and tackle your next challenge!
- Time to think about what you really want, and work out a plan of how to get there.

Contact Marianna: 01908 503194/07763 102 994  
email: [marianna@chocolateboxcoaching.co.uk](mailto:marianna@chocolateboxcoaching.co.uk)



**TOP SECRET**

**FOR YOUR EYES ONLY**

## WHADDON TRIBUTE

### Latest update

DID YOU know that Whaddon played a pivotal role in securing Allied Victory in World War 2?

Secret Communicators operated from Whaddon Hall and Windy Ridge to enable de-coded Enigma messages from Bletchley Park to be sent to Field Commanders, Special Agents and Embassies.

With the 75th Anniversary Celebrations of the first messages being sent between occupied France and Whaddon and following the launch of the Tribute in the last issue of the *Whaddon Quarterly*, approval has been given by Johnny and Roger Weatherby for a commemoration Tribute location to be sited just inside the walker's gate, next to the fence that backs onto the graveyard, to mark permanently the important work of MI6 Communications in Whaddon.

The Tribute will, amongst other things, highlight the spy-ware and communications gadgets created at Whaddon Hall before the days of James Bond and Q. It will reveal also how the first black propaganda films transmitted into Germany and Italy were recorded in Whaddon and, finally, outline the importance of Windy Ridge as a wireless station.

We hope you will be proud of Whaddon's important place in history and be able to support our efforts to permanently mark the important work of MI6 Communications.

We would be hugely appreciative of your support. Should you wish to donate, please do by using the following information:

Just Giving: <https://crowdfunding.justgiving.com/WhaddonTribute>

Or by direct donation to Barclays Bank: Account Name: Whaddon Tribute: A/C No. 83510921, Sort code: 20-57-40.

For additional Information, please contact Alex Markwick (07974 779259) or John Conneely (07831 684473) or e-mail [WhaddonTribute@outlook.com](mailto:WhaddonTribute@outlook.com)



## Any memories you want to share?

DO YOU have memories of living in Whaddon you want to shares with others? Or do you need to research a building or place?

If so and you have an MK postcode and wish to gain new creative skills, then Living Archive Milton Keynes could be one option. And your work could be added to the Living Archive website.

Living Archive is offering FREE six-week courses in 2016 to allow anyone to gain the basic skills to create a simple web page. The second of these courses has just finished, but there is ONE more: 8 June – 13 July (Summer).

To book a place or find out more contact Helen or Mel on 01908 322568 or [email\\_admin@livingarchive.org.uk](mailto:email_admin@livingarchive.org.uk). The web site is [livingarchive.org.uk](http://livingarchive.org.uk)



# Whaddon remembers secret wartime messages

A tiny, but nevertheless important piece of World War 2 history was commemorated on Sunday, 8<sup>th</sup> May in the Jubilee Hall, Whaddon with the help of the BBC.



NO, not a ceremonial journey by a camouflaged American Packard car heading from Whaddon Hall (**both pictured left**) to central London, as it would have done 75 years ago, when, as one of a fleet of 17 staff cars based at Whaddon Hall, it would have transported high-ranking military staff on secret missions.

Instead, an informal group of veterans, wireless experts and guests gathered in Jubilee Hall as Morse code messages between the UK and France were recorded by a BBC TV news crew. The occasion marked the 75<sup>th</sup> anniversary of the transmission of the first secret Morse code messages from France to England in 1941.

Today, in a world of instant knowledge, powered by the Internet, iphone, ipad and broadband, not to mention social media of various descriptions, it is hard to visualise the mind-boggling transformation that has taken place in communications.

Yet it is 75 years since special agent, Georges Bégulé, formerly of the French army and the Royal Signals, became the first Special Operations Executives (SOE) agent to parachute into enemy-occupied France. After landing near Vatan on the night of 5/6<sup>th</sup> May 1941, Bégulé made his way to Valençay to make contact with the French resistant Max Hymans. Not surprisingly, Valençay became the site of a memorial to 104 F Section agents who perished, and who were especially remembered during the 75<sup>th</sup> anniversary week.

Three days later, on 9<sup>th</sup> May, Bégulé sent his first coded wireless message to Britain from a safe-house in nearby Châteauroux. That message arrived in a temporary hut positioned near Whaddon Hall, then known as "Main Line". In 1941 this was where MI6 Section VIII received messages from SOE agents as well as the Secret Intelligence Service (SIS).

A year later, SOE received its own wireless communication network, while Section VIII at Whaddon continued to serve SIS and the Political Warfare Executive. Meanwhile, Bletchley Park's ULTRA intelligence was disseminated from Windy Ridge by elite signallers whose accommodation was on the site of, and in, the village hall.

In Whaddon, Sunday had special significance for another reason: a Morse message was sent from Bégulé's former safe-house in France and received at the Jubilee Hall on one of David White's vintage wireless sets. White, **right**, (wireless code G3ZP) founded Bletchley Park's Wireless Museum.

In Châteauroux in France, operating the Morse key, was the only wireless operator of SOE's French Section still alive in France: 94-year-old Marcel Jaurant-Singer MBE, Légion d'Honneur, Croix de Guerre.



In addition, guest speakers, short films and an exhibit of vintage wireless equipment offered an intriguing insight into the significant contribution made by Georges Bégulé; these opportunities served to remind the huge turnout present of the vital role played throughout the Second World War by Whaddon's MI6 Section VIII. This work included designing and building communications equipment for SIS and SOE, likewise supporting the work of the Political Warfare Executive (PWE), and the dissemination of Bletchley Park's ULTRA intelligence by the elite signallers working in huts on Windy Ridge. Their accommodation was in huts behind what is now Whaddon Jubilee Hall, and the Hall itself served as their Mess.

Among guest speakers offering a fascinating insight on 8<sup>th</sup> May were Debra and David Rixon who spent a year in 2002 researching, filming and editing a two-hour DVD *The Secret Wireless World* (see also Geoffrey Pidgeon's *The Secret Wireless War*). Armed with information from local

author and historian John Taylor from Bletchley, they visited and interviewed men, then in their late 70s, who were specially enlisted for secret wireless operations during World War 2.

Finally, The Chase Choir sang *Le Chant des Partisans*. The performance by the choir, dressed in costumes of French resistance fighters, was accompanied by a military snare drum and broadcast live via Skype to French colleagues in Châteauroux, after which Section VIII veteran Geoffrey Pidgeon presented a personal commemorative gift to Whaddon's Jubilee Hall. ♦

## The Chase Choir at the Milton Keynes Festival

IT WAS a pleasure and delight to see Whaddon's The Chase Choir (**pictured below**) perform on Friday 11<sup>th</sup> March at the 2016 Annual Milton Keynes Music Festival, writes Jane Herriman.

A staggering 40 members of the 50+ strong (and ever growing) community choir opened the Community section with 'Top of the World' followed by 'You Raise me Up'.

Both performances were beautifully conducted by the talented Karen Wilson and supported by pianist Holly Hopkins.

The choir were just pipped at the post by a Japanese choir but secured a healthy second place in their section. All of this bodes well for future events.

The Chase Choir, although based in Whaddon, welcomes people throughout Milton Keynes and the surrounding villages and meets on a Monday evening at 7.00pm.

It has been wonderful for all age groups in a community with a shared interest to spend time together and have real enjoyment in doing so.

Well done The Chase Choir for giving such joy to others. We look forward to future events.

A choir member adds: There's real benefit to joining a choir. Everyone has a voice, and singing together builds confidence, works the old grey matter when you have to learn new pieces, and, above all, is a whole lot of fun!

There's plenty of scientific evidence to suggest that singing is good for your wellbeing. Music is a universal communication tool; it speaks to everyone, and its healing properties are well-known.

The Chase Choir is an inclusive, friendly, welcoming space where everyone has a part to play. We're always happy to welcome new members, so just come along to the Jubilee Hall any Monday, and see for yourself. Contact Karen Logan (01908 501922), or Marianna Beckwith (01908 503194) for further details. ♦





# Yoga & Wellness with Lauren

Yoga teaches us to become present, to quieten the mind – it is the union of the mind & the body.

Yoga isn't about contorting the body into impossible shapes; it is about listening to the body and respecting its limitations, abilities & graces and embracing where we are in the present.

Most of all, yoga is something to enjoy. So, come along and give it a try – like me you just might think it's the best decision you ever make!

*Weekly classes\**

**Thursday 7.30pm – 8.30pm Hatha Yoga** open level drop-in (£5 per drop in and you can buy multiples of 5 classes)

*Other workshops/events*

**Sweet Sunday Surrender** every two months (from £10)\*\*

**Private one to one sessions** at £30 per hour. We will discuss a theme or focus beforehand so that I can prepare a bespoke session just for you! Two to one sessions or small groups are also available from £40 per hour.

www.thelollipopway.co.uk  
lauren@thelollipopway.co.uk  
01908 867940  
07764 485921

All classes are held at Whaddon Jubilee Hall MK17 0LS

\*Children welcome over the age of 13 years if accompanied by an adult and we have had a pre class meeting to assess suitability

\*\* Please note the Sweet Sunday Surrender is not suitable for children under 14 years old unless they have been a student of mine and I feel they would be able to handle the experience with respect and focus

*Namaste – the divine in me honours the divine in you. I honour the place in you where the entire Universe dwells. I honour the light, beauty, truth, love & peace within you because it is also within me and in sharing these things we are united – we are one*



Love, light + peace Lauren xxx



## Visit the Crooked Billet Newton Longville

SOME 18 months ago, the Crooked Billet changed hands and is now run by joint landlords, David Pugh and Alan Ayres. We are literally just down the road from Whaddon and we would like the Billet to be your first port of call (or if you are on your way home, your last stop off!).

During our period at the pub, we have tried to stamp a new personality on the Billet and have spent our time improving and honing what we offer our customers.

You may well be a regular visitor, but if you are not, here is a summary of what we think is most important for a local pub.

**Atmosphere** – you will always get a warm, friendly welcome when you pop in.

**Food** – we believe that when you eat out, your meal should be just that little bit “special”. Our chefs are keen to provide a meal that is creative and memorable, whilst we hope that you believe the price to be neither! You can choose a-la-carte or a bar meal at the times shown in our advert and on our website.

**Wine** – we spend time with our sommelier at our wine suppliers to select a great and varied choice of wine to accompany your food or just drink by the glass.

**Ales** – we regularly serve Greene King Abbot and our own Billet ale (brewed by Hardys & Hansons), together with two guest ales.

**Special events** – we have various special events arranged to add variety (half a dozen in the next two months). They may be themed meals, special occasions, quiz on the last Sunday in the month and many others. Please visit our website for details <http://www.thecrookedbilletmiltonkeynes.co.uk/> You will not find a TV screen inside the Billet, but we are planning to show many Euro soccer matches in our marquee in the garden – come and share the atmosphere.

**Your own Special Occasion** – please talk to us if you want to celebrate a birthday, anniversary or any other occasion. We have a large garden and can arrange wedding receptions and events in a well-dressed marquee if the facilities inside do not meet your requirements.

Please come and visit us,

Dave & Alan.



# Tim Jenkins

Providing home and small business IT and AV services



**Need help with your email, mobile phone or Broadband?  
 Just changed from PC to Mac and would like some assistance?  
 Or maybe you have bought a Smart TV or sound system  
 and would like help setting it up.**

I understand just how confusing today's technology can be and I will visit you at home to discuss how I can help with the installation, set up or problem solving of your computers, mobiles, TVs, Broadband and wifi.

I am also highly experienced in small company IT and telecommunications problem solving and website building.

**Call me on: 07814 721975**

**Or email me at: [tjstechnologyuk@gmail.com](mailto:tjstechnologyuk@gmail.com)**

**Website: [www.tjstechnology.co.uk](http://www.tjstechnology.co.uk)**



## Superb greeting cards for every occasion!

- Top quality greeting cards and stationery
- Exclusive designs for both adults and children
- Most cards are blank inside for your own message
- Only £1.75 a card (£1.40 each for 10 or more)



For a FREE Information Pack, please contact me

### Alice Hain

Independent Phoenix Trader ID-37730

**01908 505475**

[alicehain@hotmail.com](mailto:alicehain@hotmail.com)

Or visit [www.phoenix-trading.co.uk/web/alicehain](http://www.phoenix-trading.co.uk/web/alicehain)





## Perfect 10

*Nails by Faye Warren*

*07875 670448*

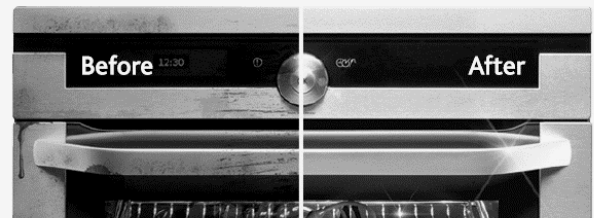
*fayewarren55@hotmail.com*

*UV Gel polish, manicures and pedicures*

*Mobile, but based in Whaddon*

+

**OVENCLEAN**  
*The original oven cleaning specialists*



**Let Ovenclean take care of one of the most hated household chores!**

**"I'm simply delighted at how sparkly clean my oven and hob look now!  
It really does look like the cooker is brand new again!"**

*Martin Belcher*

- Ovens
- Grills
- Extractors
- Filters
- BBQs
- Microwaves
- Hobs
- Ranges
- AGAs

Call your local Ovenclean specialist Roger Butcher today on:

**07800 888 271 or 0800 840 7127**

[www.ovenclean.com](http://www.ovenclean.com)



## **... PLUMBING & HEATING ON OIL FIRED BOILERS...**

- Join 100s of happy customers who rely on us to look after their appliance
- 8 years of experience in servicing and repairing oil fired boilers
- Work on all major boiler manufactures including:  
*Worcester                  Grant                  Thermecon*  
*Potterton                  Trianco                  Firebird*  
*and many more*
- Service, repairs and new installations on oil fired boilers
- New oil tank installation
- OFTEC registered
- NVQ Level Two in Plumbing
- Very good customer feedback
- No Fix, No Fee
- Receive a **£10** gift voucher for a retailer of your choice, as a thank you per recommendation
- Oil syndicates welcome

### **Contact:**

**07768 618 555**

**01908 313 216**

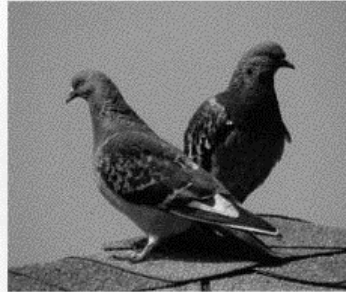






# **CLEAR PEST MILTON KEYNES**

**YEARLY CONTRACTS AVAILABLE  
WOODWORM TREATMENTS ALSO AVAILABE**



**RESIDENTIAL - COMMERCIAL - AGRICULTURAL**

**ARE ANY OF THE FOLLOWING PESTS  
A PROBLEM FOR YOU?**

- **MOLES**
- **WASPS**
- **RATS**
- **MICE**
- **BEES**
- **ANTS**
- **FLEAS**
- **RABBITS**
- **BIRDS**
- **FLIES**



**Email: [enquiries@clearpestmiltonkeynes.co.uk](mailto:enquiries@clearpestmiltonkeynes.co.uk)**

**[www.clearpestmiltonkeynes.co.uk](http://www.clearpestmiltonkeynes.co.uk)  
Tel: 01908 504405 Mob: 07771966377**



**GRNELECTRICAL**

# **Domestic, Agricultural & Equestrian Electrical Services**

Rewires - New Builds - Refurbishments  
Fault Finding & Repairs  
Inspection & Testing  
PAT Testing  
Three Phase Distribution  
(Part P Registered & Elecsa Approved)

---

**Contact: Graham Newland**  
**Tel: 07715 670614**  
**[www.grnelectrical.co.uk](http://www.grnelectrical.co.uk)**

## **DESIGN & BUILD**

*30 years' experience from  
Doug Stewart, Director, Associate of the  
Chartered Institute of Building*



**Tel: 01908 503147**  
**[matt@dgsconstruction.co.uk](mailto:matt@dgsconstruction.co.uk)**  
**[www.dgsconstruction.co.uk](http://www.dgsconstruction.co.uk)**

The Glebe, Nash Road, Whaddon, MK17 0LY

# Paperclip

Capitol Works, Station Road, Winslow, Bucks MK18 3RQ

Offering you support for all your  
personal and business administrative needs

Book-keeping

Diary management

Virtual office

Call-minding

Payroll

Typing

Fax Service

Database Cleaning

Printing and photocopying at competitive prices

A4 / A3 / A5 / Black and White / Colour

Booklet / Magazine production

Pamphlets / Leaflets

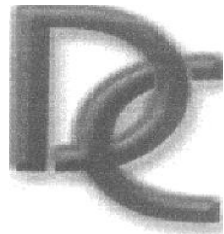
Laminating / Comb binding

For any further information please contact Sally Taylor or Leanne Walker

01296 716010

mail@paperclip.co.uk

www.paperclip.co.uk



## ELECTRICAL CONTRACTORS

- *Additional Sockets & Lights*
- *Storage Heater Installations*
- *Low Voltage Lighting*
- *All Types of Electrical Fault Finding*
- *Part "P" Approved*
- *Electrical Testing & Inspection*
- *Outside Lighting*
- *Shed, Garage & Outside Supplies*
- *Replacement Consumer Units (Fuse Box)*
- *Free Estimates*

**Home: 01296 712776**

**Mobile: 07794 510980**



**JOHN COLLINS  
ELECTRICAL**

**ELECTRICAL INSTALLATIONS  
ELECTRICAL APPLIANCE REPAIRS**

**ELECTRICAL INSTALLATIONS TO:**

**Domestic, Commercial and Industrial properties  
All work carried out to Part P regulations**

**REPAIRS TO:**

**Washing machines, electric cookers, dishwashers,  
tumble driers, electric showers, storage heaters and  
electric heating systems**



**Tel: 01280 814909**

**Fax: 01280 823179**

**Email: [john@johncollinselectrical.co.uk](mailto:john@johncollinselectrical.co.uk)**

**Web: [www.johncollinselectrical.co.uk](http://www.johncollinselectrical.co.uk)**

# **Jane Tuckwell**

*Flowers for all Occasions*

**Telephone: (01296) 720406**

**Wedding Flowers and Balloons**

**Funeral Tributes**

**Birthdays**

**Anniversaries**

**or Just a 'Thank You'**

**Free Local Delivery**

**Nationwide Delivery Available**

**Salden Crabtree Farm, Little Horwood  
Milton Keynes MK17 0PR**

# C.T. Mowers

## Garden Machinery Service and Repairs

- Lawnmowers including ride-ons
- Strimmers
- Quads
- Garden Rotavators etc

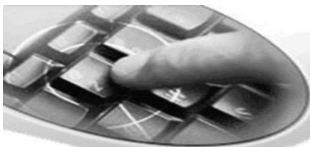
Also available: Professional Mole Catching Service

**Please call Chris for an appointment:**

**07976 980388**

**Email: [ct.mowers@yahoo.co.uk](mailto:ct.mowers@yahoo.co.uk)**

Haybush Farm – based one mile outside  
Winslow (A413-Aylesbury side)



S Y S T E M S



Microsoft Partner

### What Counter-Act Systems Can Offer You....

- ⇒ Home Visits—we can help with computer problems, email setup, data transfer, virus clean and removal, PC slow issues, iPhone connectivity, remote assistance, internet problems
- ⇒ New Home and Business Hardware

- ⇒ Extended Warranty on ALL brands of PCs.
- ⇒ Repairs for Desktop and Laptop Computers for all issues, including broken laptop screens. All repairs carry a 12-month warranty as standard
- ⇒ If you're not sure what we can do for you, ring us !

**Telephone: 01234 240680**

**Web: [www.counter-act.co.uk](http://www.counter-act.co.uk)**

**Email: [sales@counter-act.co.uk](mailto:sales@counter-act.co.uk)**

**Fully Equipped Workshop & Showroom :**  
Unit 1, Lower Farm, Warrington, Olney,  
MK46 4HN (Near Captain Carpet)

**Open Monday to Friday 9am to 5.00pm**  
(plus out of hours emergency and answer system)





**Your Friendly Pub**

**just up the road serving Excellent Food, Wines & Ales**

**Tel: 01908 373936**

***Relax in The Crooked Billet, Newton  
Longville and Enjoy***

***A La Carte Dining***

Our a la carte menu is available Mon to Sat 12.00-14.30 and 18.00-21.00 (21.30 on Fri/Sat)

We now serve Sunday lunch from 12.00 until 17.00

***Excellent Wines and Ales***

We have a carefully selected range of wines and good real ales

***All Day Bar Menu***

Our popular bar menu is available Mon to Sat, 12.00-21.00

***Exquisite Afternoon Tea***

Treat yourself and friends to a superb, relaxing Afternoon Tea at the Crooked Billet

Twinnings/Gin & Tonic/Prosecco – Your Choice!

From 15.00-19.00, 7 days a week

*Telephone or call in at least 24 hours in advance to book afternoon tea*

***New Direct Booking Facility***

*You can now book lunches and dinners direct at our refreshed website  
[www.thecrookedbilletmiltonkeynes.co.uk](http://www.thecrookedbilletmiltonkeynes.co.uk) – add it to your favourites!*

## **PETER BUSH**

*Motor Vehicle Technician with over 30 years' experience*

Servicing and repairs for all makes and models

Competitive rates

Collection & delivery service available

***Please call:***

**07525 489441 / 07525 489442**

**Email: [jm1234btinternet.com](mailto:jm1234btinternet.com)**

**22 Vicarage Road, Whaddon, MK17 0LU**



## **GREENTREESERVICES**

PROFESSIONAL TREE SURGEONS



**All aspects of Tree Surgery and Arboriculture:**

- Tree pruning & felling
  - Hedge trimming
  - Tree reports & surveys
  - Stump grinding
  - Firewood supply
- 
- Free quotes & advice
  - £5m Public Liability Insurance
  - NPTC Qualified
  - National Diploma Arboriculture

**01908 506286 – 07533 371648**

**[WWW.GREEN-TREE-SERVICES.CO.UK](http://WWW.GREEN-TREE-SERVICES.CO.UK)**

**City&  
Guilds  
Qualified**

*Homemade Jewelry / Cards  
for all occasions  
Dress Making & Alterations*



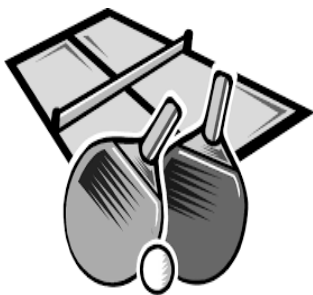
*Ann Bennett*

Stock Lane  
Whaddon

01908 522292

07854 577402

ann.bennett259@gmail.com



## **Join us for Table Tennis in the Jubilee Hall**

**Every Tuesday from 8pm-9pm**

Singles and Doubles      Admission only £1

All equipment provided

2 tables available      Rules explained

Coaching given      School pupils welcome from age 8

Beginners or experts welcome

**Contact Mark Carter: [magcarter@hotmail.co.uk](mailto:magcarter@hotmail.co.uk)  
or just turn up**

## **Men in Sheds Buckingham**

Men in Sheds provides a place where men of all ages can come along and take part in activities similar to what they would do in their own garden shed but with the bonus of other like-minded men providing good company.

Samantha Hardy, Community Impact Bucks

01844 348831 / 07990 756742 - email: [samantha@communityimpactbucks.org.uk](mailto:samantha@communityimpactbucks.org.uk)